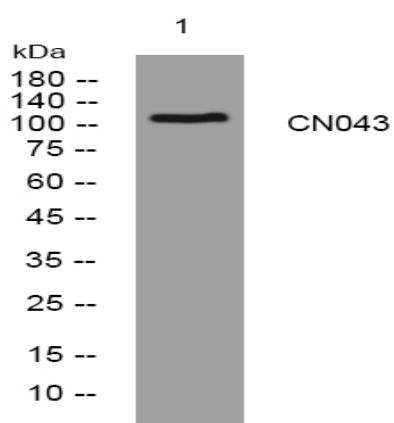


CN043 rabbit pAb

Catalog No :	YT7400
Reactivity :	Human
Applications :	WB
Target :	CN043
Gene Name :	C14orf43 C14orf117
Protein Name :	CN043
Human Gene Id :	91748
Human Swiss Prot No :	Q6PJG2
Immunogen :	Synthesized peptide derived from human CN043 AA range: 518-568
Specificity :	This antibody detects endogenous levels of CN043 at Human
Formulation :	Liquid in PBS containing 50% glycerol, 0.5% BSA and 0.02% sodium azide.
Source :	Polyclonal, Rabbit,IgG
Dilution :	WB 1[?]500-2000
Purification :	The antibody was affinity-purified from rabbit antiserum by affinity-chromatography using epitope-specific immunogen.
Concentration :	1 mg/ml
Storage Stability :	-15°C to -25°C/1 year(Do not lower than -25°C)
Molecularweight :	115kD
Function :	similarity:Contains 1 ELM2 domain.,similarity:Contains 1 SANT domain.,

Subcellular Location :	Nucleus .
Sort :	4330
No4 :	1
Host :	Rabbit
Modifications :	Unmodified

Products Images



Western blot analysis of lysates from HpeG2 cells, primary antibody was diluted at 1:1000, 4° over night