

PCGF5 rabbit pAb

Catalog No :	YT7399
Reactivity :	Human;Mouse
Applications :	WB;ELISA;IHC
Target :	PCGF5
Fields :	>>Signaling pathways regulating pluripotency of stem cells
Gene Name :	PCGF5 RNF159
Protein Name :	PCGF5
Human Gene Id :	84333
Human Swiss Prot No :	Q86SE9
Mouse Gene Id :	76073
Mouse Swiss Prot No :	Q3UK78
Immunogen :	Synthesized peptide derived from human PCGF5 AA range: 65-115
Specificity :	This antibody detects endogenous levels of PCGF5 at Human/Mouse
Formulation :	Liquid in PBS containing 50% glycerol, 0.5% BSA and 0.02% sodium azide.
Source :	Polyclonal, Rabbit,IgG
Dilution :	WB 1:500-2000;IHC 1:50-300; ELISA 2000-20000
Purification :	The antibody was affinity-purified from rabbit antiserum by affinity-chromatography using epitope-specific immunogen.
Concentration :	1 mg/ml

Storage Stability : -15°C to -25°C/1 year(Do not lower than -25°C)

Molecularweight : 28kD

Function : function:Probable component of some Polycomb group (PcG) multiprotein complex, a complex required to maintain the transcriptionally repressive state of some genes.,similarity:Contains 1 RING-type zinc finger.,

Subcellular Location : Nucleus . Nucleus, nucleoplasm . Recruited by the non-coding RNA Xist to specific nuclear foci that probably correspond to the inactivated X chromosome. .

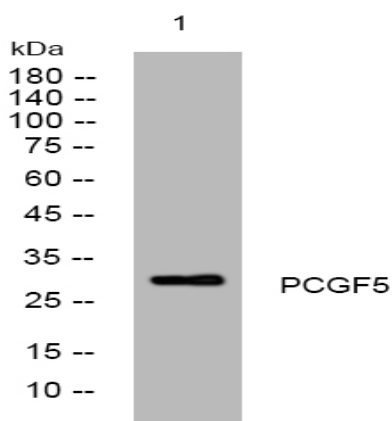
Sort : 11693

No4 : 1

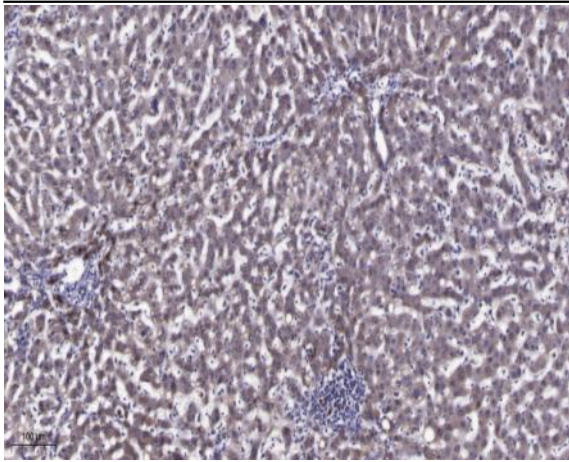
Host : Rabbit

Modifications : Unmodified

Products Images



Western blot analysis of lysates from MCF-7 cells, primary antibody was diluted at 1:1000, 4° over night



Immunohistochemical analysis of paraffin-embedded human liver cancer. 1, Antibody was diluted at 1:200(4° overnight). 2, Tris-EDTA,pH9.0 was used for antigen retrieval. 3,Secondary antibody was diluted at 1:200(room temperature, 45min).