

TM59L rabbit pAb

Catalog No :	YT7398
Reactivity :	Human;Mouse;Rat
Applications :	WB
Target :	TM59L
Gene Name :	TMEM59L BSMAP C19orf4
Protein Name :	TM59L
Human Gene Id :	25789
Human Swiss Prot No :	Q9UK28
Mouse Gene Id :	67937
Mouse Swiss Prot No :	Q7TNI2
Rat Swiss Prot No :	Q5HZE8
Immunogen :	Synthesized peptide derived from human TM59L AA range: 177-227
Specificity :	This antibody detects endogenous levels of TM59L at Human/Mouse/Rat
Formulation :	Liquid in PBS containing 50% glycerol, 0.5% BSA and 0.02% sodium azide.
Source :	Polyclonal, Rabbit,IgG
Dilution :	WB 1:500-2000
Purification :	The antibody was affinity-purified from rabbit antiserum by affinity-chromatography using epitope-specific immunogen.
Concentration :	1 mg/ml

Storage Stability : -15°C to -25°C/1 year(Do not lower than -25°C)

Molecularweight : 38kD

Background : This gene encodes a predicted type-I membrane glycoprotein. The encoded protein may play a role in functioning of the central nervous system. [provided by RefSeq, Jul 2008],

Function : function:May have a role in brain function.,similarity:Belongs to the TMEM59 family.,subcellular location:Could be associated with an intracellular organelle or membrane.,tissue specificity:Expressed preferentially at high level in the brain.,

Subcellular Location : Golgi apparatus membrane ; Single-pass type I membrane protein .

Expression : Expressed preferentially at high level in the brain.

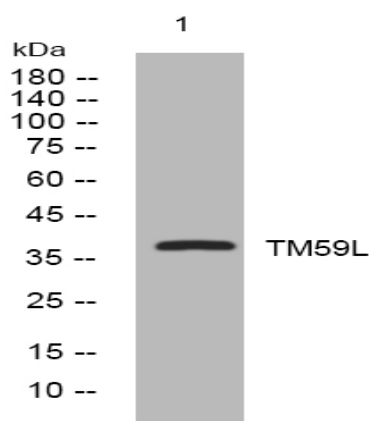
Sort : 17222

No4 : 1

Host : Rabbit

Modifications : Unmodified

Products Images



Western blot analysis of lysates from HeLa cells, primary antibody was diluted at 1:1000, 4° over night