

SERF2 rabbit pAb

Catalog No :	YT7397
Reactivity :	Human;Mouse
Applications :	IHC;IF
Target :	SERF2
Gene Name :	SERF2 FAM2C
Protein Name :	SERF2
Human Gene Id :	10169
Human Swiss Prot No :	P84101
Mouse Gene Id :	378702
Mouse Swiss Prot No :	P84102
Immunogen :	Synthesized peptide derived from human SERF2 AA range: 1-80
Specificity :	This antibody detects endogenous levels of SERF2 at Human/Mouse
Formulation :	Liquid in PBS containing 50% glycerol, 0.5% BSA and 0.02% sodium azide.
Source :	Polyclonal, Rabbit,IgG
Dilution :	IHC 1:50-200. IF 1:50-200
Purification :	The antibody was affinity-purified from rabbit antiserum by affinity-chromatography using epitope-specific immunogen.
Concentration :	1 mg/ml
Storage Stability :	-15°C to -25°C/1 year(Do not lower than -25°C)

Molecularweight : 6kD

Function : sequence caution:Wrong choice of frame.,similarity:Belongs to the SERF family.,subunit:May interact with the N-terminus of HD.,

Subcellular Location : nucleus,cytosol,

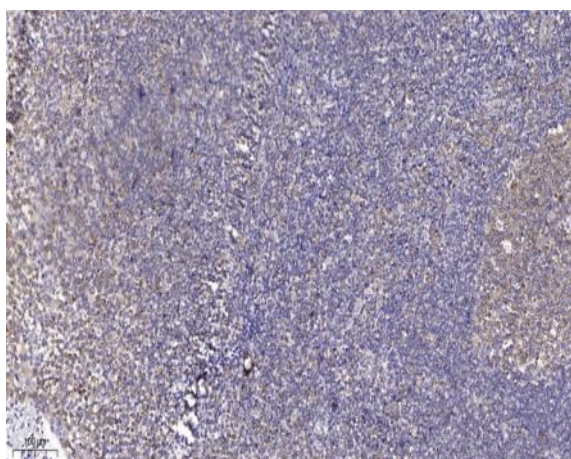
Sort : 16241

No4 : 1

Host : Rabbit

Modifications : Unmodified

Products Images



Immunohistochemical analysis of paraffin-embedded human tonsil. 1, Antibody was diluted at 1:200(4° overnight). 2, Tris-EDTA,pH9.0 was used for antigen retrieval. 3,Secondary antibody was diluted at 1:200(room temperature, 45min).