

ENHO rabbit pAb

Catalog No :	YT7396
Reactivity :	Human;Mouse
Applications :	IHC;IF
Target :	ENHO
Gene Name :	ENHO C9orf165 UNQ470/PRO830
Protein Name :	ENHO
Human Gene Id :	375704
Human Swiss Prot No :	Q6UWT2
Mouse Gene Id :	69638
Mouse Swiss Prot No :	Q8K1D8
Immunogen :	Synthesized peptide derived from human ENHO AA range: 15-65
Specificity :	This antibody detects endogenous levels of ENHO at Human/Mouse
Formulation :	Liquid in PBS containing 50% glycerol, 0.5% BSA and 0.02% sodium azide.
Source :	Polyclonal, Rabbit,IgG
Dilution :	IHC 1:50-200. IF 1:50-200
Purification :	The antibody was affinity-purified from rabbit antiserum by affinity-chromatography using epitope-specific immunogen.
Concentration :	1 mg/ml
Storage Stability :	-15°C to -25°C/1 year(Do not lower than -25°C)

Molecularweight : 8kD

Function : function:Involved in the regulation of glucose homeostasis and lipid metabolism.,tissue specificity:Expressed in liver and brain.,

Subcellular Location : Secreted .

Expression : Expressed in liver and brain.

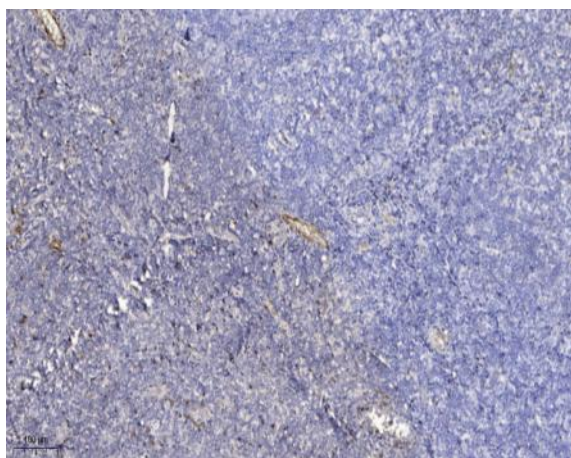
Sort : 5564

No4 : 1

Host : Rabbit

Modifications : Unmodified

Products Images



Immunohistochemical analysis of paraffin-embedded human tonsil. 1, Antibody was diluted at 1:200(4° overnight). 2, Tris-EDTA,pH9.0 was used for antigen retrieval. 3,Secondary antibody was diluted at 1:200(room temperature, 30min).