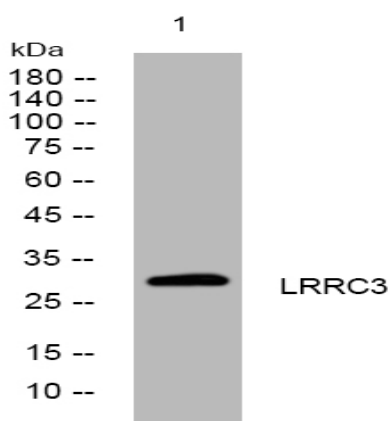


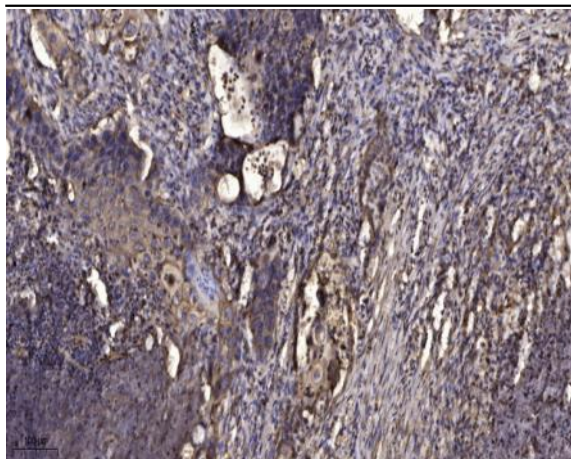
LRRC3 rabbit pAb

Catalog No :	YT7392
Reactivity :	Human;Mouse;Rat
Applications :	WB;IHC
Target :	LRRC3
Gene Name :	LRRC3 C21orf102 LRRC3A UNQ9233/PRO31982
Protein Name :	LRRC3
Human Gene Id :	81543
Human Swiss Prot No :	Q9BY71
Mouse Gene Id :	237387
Mouse Swiss Prot No :	P59034
Rat Gene Id :	246773
Rat Swiss Prot No :	P59035
Immunogen :	Synthesized peptide derived from human LRRC3 AA range: 110-160
Specificity :	This antibody detects endogenous levels of LRRC3 at Human/Mouse/Rat
Formulation :	Liquid in PBS containing 50% glycerol, 0.5% BSA and 0.02% sodium azide.
Source :	Polyclonal, Rabbit,IgG
Dilution :	WB 1:500-2000;IHC 1:50-300
Purification :	The antibody was affinity-purified from rabbit antiserum by affinity-chromatography using epitope-specific immunogen.

Concentration :	1 mg/ml
Storage Stability :	-15°C to -25°C/1 year(Do not lower than -25°C)
Molecularweight :	28kD
Function :	similarity:Belongs to the LRRC3 family.,similarity:Contains 3 LRR (leucine-rich) repeats.,tissue specificity:Widely expressed; detected in testis, lung, small intestine, breast, brain, heart, bone marrow, placenta, colon, fetal brain, liver, fetal liver, thymus, salivary gland, spinal cord, spleen, trachea and adrenal gland.,
Subcellular Location :	Membrane ; Single-pass membrane protein .
Expression :	Widely expressed; detected in testis, lung, small intestine, breast, brain, heart, bone marrow, placenta, colon, fetal brain, liver, fetal liver, thymus, salivary gland, spinal cord, spleen, trachea and adrenal gland.
Sort :	9255
No4 :	1
Host :	Rabbit
Modifications :	Unmodified

Products Images





Immunohistochemical analysis of paraffin-embedded human Squamous cell carcinoma of lung. 1, Antibody was diluted at 1:200(4° overnight). 2, Tris-EDTA,pH9.0 was used for antigen retrieval. 3,Secondary antibody was diluted at 1:200(room temperature, 45min).