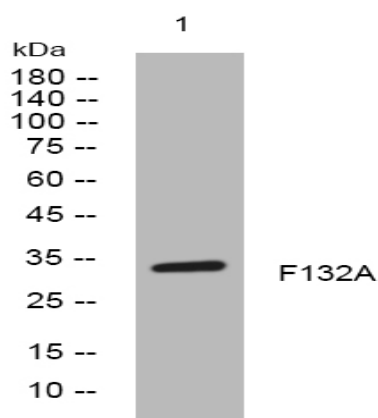


F132A rabbit pAb

Catalog No :	YT7386
Reactivity :	Human;Mouse
Applications :	WB
Target :	F132A
Gene Name :	FAM132A C1QDC2
Protein Name :	F132A
Human Gene Id :	388581
Human Swiss Prot No :	Q5T7M4
Mouse Gene Id :	67389
Mouse Swiss Prot No :	Q8R2Z0
Immunogen :	Synthesized peptide derived from human F132A AA range: 193-243
Specificity :	This antibody detects endogenous levels of F132A at Human/Mouse
Formulation :	Liquid in PBS containing 50% glycerol, 0.5% BSA and 0.02% sodium azide.
Source :	Polyclonal, Rabbit,IgG
Dilution :	WB 1:500-2000
Purification :	The antibody was affinity-purified from rabbit antiserum by affinity-chromatography using epitope-specific immunogen.
Concentration :	1 mg/ml
Storage Stability :	-15°C to -25°C/1 year(Do not lower than -25°C)

Molecularweight :	33kD
Function :	similarity:Belongs to the FAM132 family.,
Subcellular Location :	[Adipolin fC1QTNF12]: Secreted .; [Adipolin gC1QTNF12]: Secreted . In sera is the predominant form. .
Expression :	Predominantly expressed by adipose tissues.
Sort :	5816
No4 :	1
Host :	Rabbit
Modifications :	Unmodified

Products Images



Western blot analysis of lysates from MCF-7 cells, primary antibody was diluted at 1:1000, 4° over night