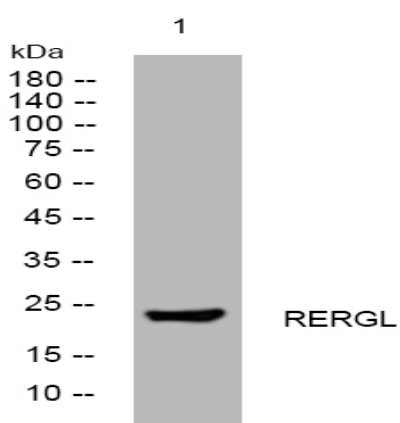


RERGL rabbit pAb

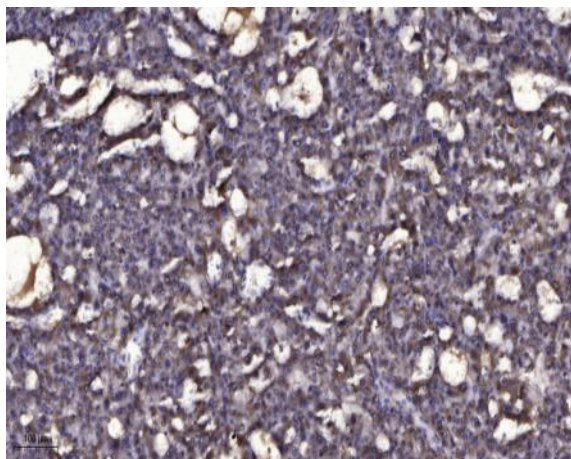
Catalog No :	YT7380
Reactivity :	Human
Applications :	WB;ELISA;IHC
Target :	RERGL
Gene Name :	RERGL
Protein Name :	RERGL
Human Gene Id :	79785
Human Swiss Prot No :	Q9H628
Immunogen :	Synthesized peptide derived from human RERGL AA range: 16-66
Specificity :	This antibody detects endogenous levels of RERGL at Human
Formulation :	Liquid in PBS containing 50% glycerol, 0.5% BSA and 0.02% sodium azide.
Source :	Polyclonal, Rabbit,IgG
Dilution :	WB 1:500-2000;IHC 1:50-300; ELISA 2000-20000
Purification :	The antibody was affinity-purified from rabbit antiserum by affinity-chromatography using epitope-specific immunogen.
Concentration :	1 mg/ml
Storage Stability :	-15°C to -25°C/1 year(Do not lower than -25°C)
Molecularweight :	23kD
Function :	function: Binds GDP/GTP and may possess intrinsic GTPase activity.,similarity: Belongs to the small GTPase superfamily. Ras family.,

Subcellular Location :	intracellular,membrane,
Sort :	14391
No4 :	1
Host :	Rabbit
Modifications :	Unmodified

Products Images



Western blot analysis of lysates from SH-SY5Y cells, primary antibody was diluted at 1:1000, 4° over night



Immunohistochemical analysis of paraffin-embedded human liver cancer. 1, Antibody was diluted at 1:200(4° overnight). 2, Tris-EDTA,pH9.0 was used for antigen retrieval. 3,Secondary antibody was diluted at 1:200(room temperature, 45min).