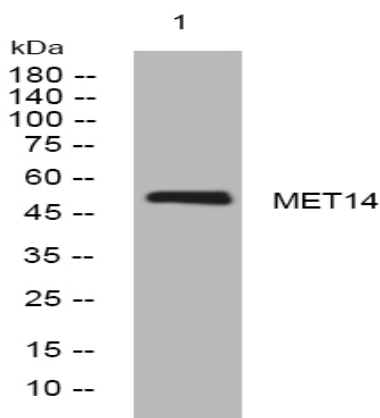


MET14 rabbit pAb

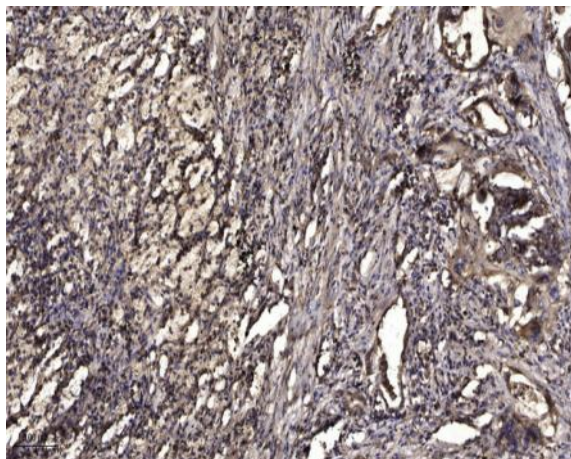
Catalog No :	YT7379
Reactivity :	Human;Mouse
Applications :	WB;ELISA;IHC
Target :	MET14
Gene Name :	METTLL14 KIAA1627
Protein Name :	MET14
Human Gene Id :	57721
Human Swiss Prot No :	Q9HCE5
Mouse Gene Id :	210529
Mouse Swiss Prot No :	Q3UIK4
Immunogen :	Synthesized peptide derived from human MET14 AA range: 360-410
Specificity :	This antibody detects endogenous levels of MET14 at Human/Mouse
Formulation :	Liquid in PBS containing 50% glycerol, 0.5% BSA and 0.02% sodium azide.
Source :	Polyclonal, Rabbit,IgG
Dilution :	WB 1:500-2000;IHC 1:50-300; ELISA 2000-20000
Purification :	The antibody was affinity-purified from rabbit antiserum by affinity-chromatography using epitope-specific immunogen.
Concentration :	1 mg/ml
Storage Stability :	-15°C to -25°C/1 year(Do not lower than -25°C)

Molecularweight : 50kD**Function :** function:Probable methyltransferase.,similarity:Belongs to the MT-A70-like family.,**Subcellular Location :** Nucleus .**Tag :** hot**Sort :** 9605**No4 :** 1**Host :** Rabbit**Modifications :** Unmodified

Products Images



Western blot analysis of lysates from HpeG2 cells, primary antibody was diluted at 1:1000, 4° over night



Immunohistochemical analysis of paraffin-embedded human Squamous cell carcinoma of lung. 1, Antibody was diluted at 1:200(4° overnight). 2, Tris-EDTA,pH9.0 was used for antigen retrieval. 3,Secondary antibody was diluted at 1:200(room temperature, 45min).