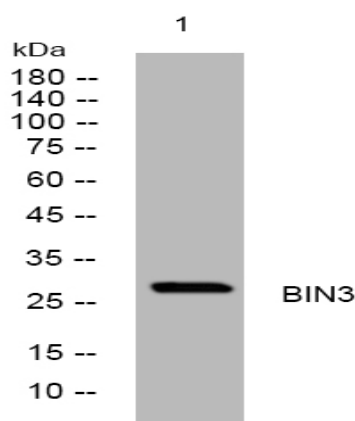


BIN3 rabbit pAb

Catalog No :	YT7378
Reactivity :	Human;Mouse;Rat
Applications :	WB
Target :	BIN3
Gene Name :	BIN3
Protein Name :	BIN3
Human Gene Id :	55909
Human Swiss Prot No :	Q9NQY0
Mouse Gene Id :	57784
Mouse Swiss Prot No :	Q9JI08
Rat Gene Id :	361065
Rat Swiss Prot No :	Q68FW8
Immunogen :	Synthesized peptide derived from human BIN3 AA range: 184-234
Specificity :	This antibody detects endogenous levels of BIN3 at Human/Mouse/Rat
Formulation :	Liquid in PBS containing 50% glycerol, 0.5% BSA and 0.02% sodium azide.
Source :	Polyclonal, Rabbit,IgG
Dilution :	WB 1:500-2000
Purification :	The antibody was affinity-purified from rabbit antiserum by affinity-chromatography using epitope-specific immunogen.

Concentration :	1 mg/ml
Storage Stability :	-15°C to -25°C/1 year(Do not lower than -25°C)
Molecularweight :	28kD
Background :	The product of this gene is a member of the BAR domain protein family. The encoded protein is comprised solely of a BAR domain which is predicted to form coiled-coil structures and proposed to mediate dimerization, sense and induce membrane curvature, and bind small GTPases. BAR domain proteins have been implicated in endocytosis, intracellular transport, and a diverse set of other processes. [provided by RefSeq, Jul 2008],
Function :	function:Involved in cytokinesis and septation where it has a role in the localization of F-actin.,similarity:Contains 1 BAR domain.,tissue specificity:Ubiquitously expressed except in brain.,
Subcellular Location :	Cytoplasm, cytoskeleton.
Expression :	Ubiquitously expressed except in brain.
Sort :	2698
No4 :	1
Host :	Rabbit
Modifications :	Unmodified

Products Images



Western blot analysis of lysates from 3T3 cells, primary antibody was diluted at 1:1000, 4° over night