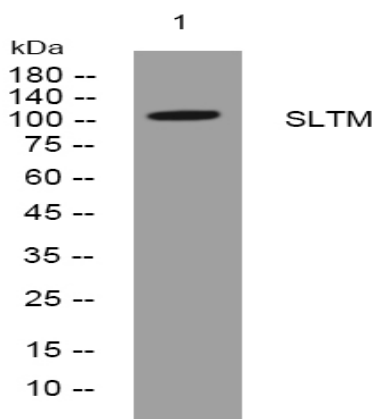


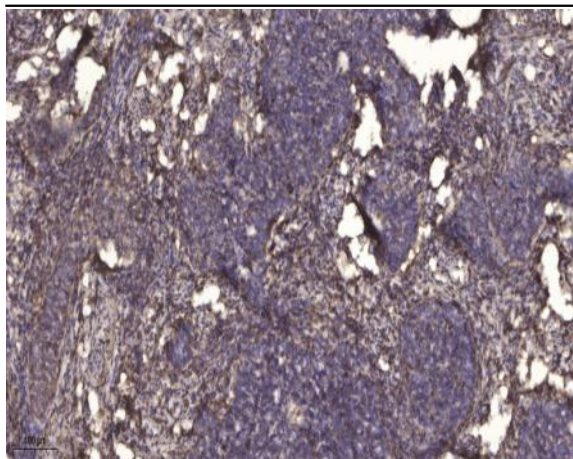
SLTM rabbit pAb

Catalog No :	YT7364
Reactivity :	Human;Mouse
Applications :	WB;IHC
Target :	SLTM
Gene Name :	SLTM MET
Protein Name :	SLTM
Human Gene Id :	79811
Human Swiss Prot No :	Q9NWH9
Mouse Gene Id :	66660
Mouse Swiss Prot No :	Q8CH25
Immunogen :	Synthesized peptide derived from human SLTM AA range: 562-612
Specificity :	This antibody detects endogenous levels of SLTM at Human/Mouse
Formulation :	Liquid in PBS containing 50% glycerol, 0.5% BSA and 0.02% sodium azide.
Source :	Polyclonal, Rabbit,IgG
Dilution :	WB 1:500-2000;IHC 1:50-300
Purification :	The antibody was affinity-purified from rabbit antiserum by affinity-chromatography using epitope-specific immunogen.
Concentration :	1 mg/ml
Storage Stability :	-15°C to -25°C/1 year(Do not lower than -25°C)

Molecularweight : 114kD**Function :** function:When overexpressed, acts as a general inhibitor of transcription that eventually leads to apoptosis.,PTM:Phosphorylated upon DNA damage, probably by ATM or ATR.,sequence caution:Contaminating sequence. Potential poly-A sequence.,sequence caution:Translation N-terminally extended.,similarity:Contains 1 RRM (RNA recognition motif) domain.,similarity:Contains 1 SAP domain.,subcellular location:Detected in punctate structures.,**Subcellular Location :** Nucleus . Detected in punctate structures .**Sort :** 16380**No4 :** 1**Host :** Rabbit**Modifications :** Unmodified

Products Images





Immunohistochemical analysis of paraffin-embedded human cervical carcinoma. 1, Antibody was diluted at 1:200(4° overnight). 2, Tris-EDTA,pH9.0 was used for antigen retrieval. 3,Secondary antibody was diluted at 1:200(room temperature, 45min).