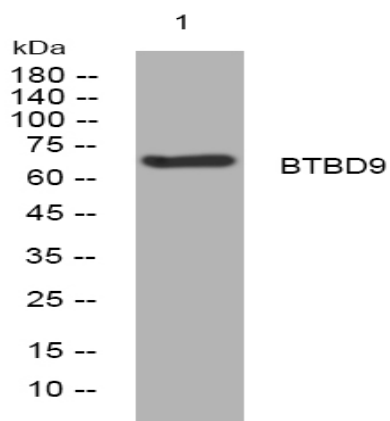


BTBD9 rabbit pAb

Catalog No :	YT7358
Reactivity :	Human;Mouse;Rat
Applications :	WB
Target :	BTBD9
Gene Name :	BTBD9 KIAA1880
Protein Name :	BTBD9
Human Gene Id :	114781
Human Swiss Prot No :	Q96Q07
Mouse Gene Id :	224671
Mouse Swiss Prot No :	Q8C726
Rat Gene Id :	294318
Rat Swiss Prot No :	Q5PQR3
Immunogen :	Synthesized peptide derived from human BTBD9 AA range: 424-474
Specificity :	This antibody detects endogenous levels of BTBD9 at Human/Mouse/Rat
Formulation :	Liquid in PBS containing 50% glycerol, 0.5% BSA and 0.02% sodium azide.
Source :	Polyclonal, Rabbit,IgG
Dilution :	WB 1:500-2000
Purification :	The antibody was affinity-purified from rabbit antiserum by affinity-chromatography using epitope-specific immunogen.

Concentration :	1 mg/ml
Storage Stability :	-15°C to -25°C/1 year(Do not lower than -25°C)
Molecularweight :	67kD
Background :	This locus encodes a BTB/POZ domain-containing protein. This domain is known to be involved in protein-protein interactions. Polymorphisms at this locus have been reported to be associated with susceptibility to Restless Legs Syndrome and may also be associated with Tourette Syndrome. Alternatively spliced transcript variants have been described. [provided by RefSeq, Aug 2011],
Function :	disease:Genetic variations in BTBD9 are associated with susceptibility to restless legs syndrome type 6 (RLS6) [MIM:611185]; also called periodic limb movements in sleep. Restless legs syndrome (RLS) is a neurologic disorder characterized by an uncontrollable urge to move the legs during periods of rest. The majority of patients with RLS also have periodic limb movements in sleep, which are characterized by involuntary, highly stereotypical, regularly occurring limb movements that occur during sleep.,similarity:Contains 1 BACK (BTB/Kelch associated) domain.,similarity:Contains 1 BTB (POZ) domain.,tissue specificity:Highly expressed in kidney and moderately expressed in all other adult and fetal tissues. Moderately expressed in all specific brain regions examined.,
Subcellular Location :	cytoplasm,SCF ubiquitin ligase complex,
Expression :	Detected in the brain (at protein level) (PubMed:22658601). Moderately expressed in all specific brain regions examined (PubMed:11572484). Expressed in the dopaminergic neurons of the substantia nigra and A11 neurons (PubMed:22658601). Highly expressed in kidney and moderately expressed in all other adult and fetal tissues (PubMed:11572484).
Sort :	2891
No4 :	1
Host :	Rabbit
Modifications :	Unmodified

Products Images



Western blot analysis of lysates from 293T cells, primary antibody was diluted at 1:1000, 4° over night