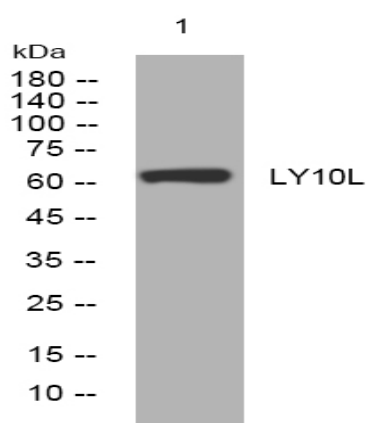


LY10L rabbit pAb

Catalog No :	YT7357
Reactivity :	Human
Applications :	WB
Target :	LY10L
Gene Name :	SP140L
Protein Name :	LY10L
Human Gene Id :	93349
Human Swiss Prot No :	Q9H930
Immunogen :	Synthesized peptide derived from human LY10L AA range: 178-228
Specificity :	This antibody detects endogenous levels of LY10L at Human
Formulation :	Liquid in PBS containing 50% glycerol, 0.5% BSA and 0.02% sodium azide.
Source :	Polyclonal, Rabbit,IgG
Dilution :	WB 1:500-2000
Purification :	The antibody was affinity-purified from rabbit antiserum by affinity-chromatography using epitope-specific immunogen.
Concentration :	1 mg/ml
Storage Stability :	-15°C to -25°C/1 year(Do not lower than -25°C)
Molecularweight :	64kD
Function :	similarity:Contains 1 HSR domain.,similarity:Contains 1 PHD-type zinc finger.,similarity:Contains 1 SAND domain.,

Subcellular Location :	nucleus,
Sort :	9297
No4 :	1
Host :	Rabbit
Modifications :	Unmodified

Products Images



Western blot analysis of lysates from K562 cells, primary antibody was diluted at 1:1000, 4° over night