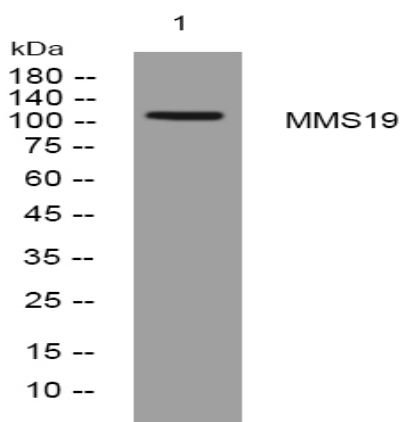


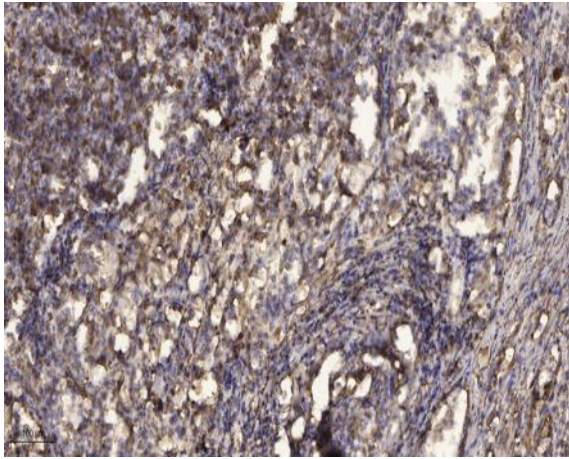
MMS19 rabbit pAb

Catalog No :	YT7356
Reactivity :	Human;Mouse
Applications :	WB;ELISA;IHC
Target :	MMS19
Gene Name :	MMS19 MMS19L
Protein Name :	MMS19
Human Gene Id :	64210
Human Swiss Prot No :	Q96T76
Mouse Gene Id :	72199
Mouse Swiss Prot No :	Q9D071
Immunogen :	Synthesized peptide derived from human MMS19 AA range: 653-703
Specificity :	This antibody detects endogenous levels of MMS19 at Human/Mouse
Formulation :	Liquid in PBS containing 50% glycerol, 0.5% BSA and 0.02% sodium azide.
Source :	Polyclonal, Rabbit,IgG
Dilution :	WB 1:500-2000;IHC 1:50-300; ELISA 2000-20000
Purification :	The antibody was affinity-purified from rabbit antiserum by affinity-chromatography using epitope-specific immunogen.
Concentration :	1 mg/ml
Storage Stability :	-15°C to -25°C/1 year(Do not lower than -25°C)

Molecularweight : 113kD**Function :** function:May play a role in nucleotide excision repair (NER) and RNA polymerase II (POL II) transcription by interacting with ERCC2/XPD and ERCC3/XPB helicases, both subunits of NER-transcription factor TFIIH. May also function as a transcriptional coactivator of estrogen receptor (ER). May be involved in regulation of ER activity by bridging TFIIH with ER or may facilitate TFIIH-mediated phosphorylation of ER in specific promoters and cell types.,similarity:Belongs to the MET18/MMS19 family.,similarity:Contains 7 HEAT repeats.,subunit:Interacts with ERCC2/XPD, ERCC3/XPB and NCOA3/RAC3.,tissue specificity:Ubiquitously expressed with higher expression in testis.,**Subcellular Location :** Nucleus . Cytoplasm, cytoskeleton, spindle . Cytoplasm, cytoskeleton, microtubule organizing center, centrosome . In mitosis, enriched on centrosomes during prophase, localizes to the spindle during metaphase and surrounds compacted spindle midzone microtubules during telophase. .**Expression :** Ubiquitously expressed with higher expression in testis.**Sort :** 9718**No4 :** 1**Host :** Rabbit**Modifications :** Unmodified

Products Images





Immunohistochemical analysis of paraffin-embedded human Squamous cell carcinoma of lung. 1, Antibody was diluted at 1:200(4° overnight). 2, Tris-EDTA,pH9.0 was used for antigen retrieval. 3,Secondary antibody was diluted at 1:200(room temperature, 45min).