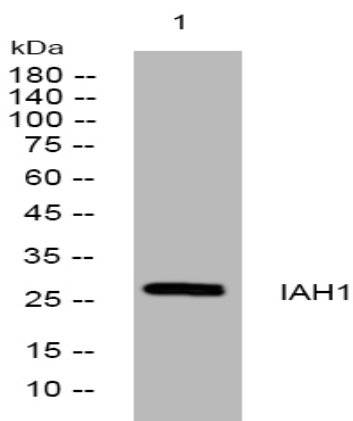


IAH1 rabbit pAb

Catalog No :	YT7350
Reactivity :	Human;Mouse;Rat
Applications :	WB
Target :	IAH1
Gene Name :	IAH1
Protein Name :	IAH1
Human Gene Id :	285148
Human Swiss Prot No :	Q2TAA2
Mouse Gene Id :	67732
Mouse Swiss Prot No :	Q9DB29
Rat Gene Id :	298917
Rat Swiss Prot No :	Q711G3
Immunogen :	Synthesized peptide derived from human IAH1 AA range: 22-72
Specificity :	This antibody detects endogenous levels of IAH1 at Human/Mouse/Rat
Formulation :	Liquid in PBS containing 50% glycerol, 0.5% BSA and 0.02% sodium azide.
Source :	Polyclonal, Rabbit,IgG
Dilution :	WB 1:500-2000
Purification :	The antibody was affinity-purified from rabbit antiserum by affinity-chromatography using epitope-specific immunogen.

Concentration :	1 mg/ml
Storage Stability :	-15°C to -25°C/1 year(Do not lower than -25°C)
Molecularweight :	27kD
Function :	function:Probable lipase.,similarity:Belongs to the 'GDSSL' lipolytic enzyme family. IAH1 subfamily.,
Subcellular Location :	extracellular exosome,
Sort :	8294
No4 :	1
Host :	Rabbit
Modifications :	Unmodified

Products Images



Western blot analysis of lysates from SH-SY5Y cells, primary antibody was diluted at 1:1000, 4° over night