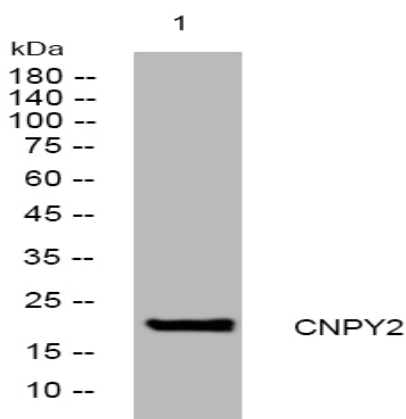


CNPY2 rabbit pAb

Catalog No :	YT7342
Reactivity :	Human;Mouse
Applications :	WB
Target :	CNPY2
Gene Name :	CNPY2 MSAP TMEM4 ZSIG9 UNQ1943/PRO4426
Protein Name :	CNPY2
Human Gene Id :	10330
Human Swiss Prot No :	Q9Y2B0
Mouse Gene Id :	56530
Mouse Swiss Prot No :	Q9QXT0
Immunogen :	Synthesized peptide derived from human CNPY2 AA range: 26-76
Specificity :	This antibody detects endogenous levels of CNPY2 at Human/Mouse
Formulation :	Liquid in PBS containing 50% glycerol, 0.5% BSA and 0.02% sodium azide.
Source :	Polyclonal, Rabbit,IgG
Dilution :	WB 1:500-2000
Purification :	The antibody was affinity-purified from rabbit antiserum by affinity-chromatography using epitope-specific immunogen.
Concentration :	1 mg/ml
Storage Stability :	-15°C to -25°C/1 year(Do not lower than -25°C)

Molecularweight : 20kD**Function :** function:Positive regulator of neurite outgrowth by stabilizing myosin regulatory light chain (MRLC). It prevents MIR-mediated MRLC ubiquitination and its subsequent proteasomal degradation.,similarity:Belongs to the canopy family.,similarity:Contains 1 saposin B-type domain.,subunit:Interacts with MYLIP/MIR.,tissue specificity:Expressed in different tissues. Highest levels are detected in adult placenta, liver and pancreas.,**Subcellular Location :** Endoplasmic reticulum .**Expression :** Expressed in different tissues. Highest levels are detected in adult placenta, liver and pancreas.**Sort :** 4351**No4 :** 1**Host :** Rabbit**Modifications :** Unmodified

Products Images



Western blot analysis of lysates from HeLa cells, primary antibody was diluted at 1:1000, 4° over night