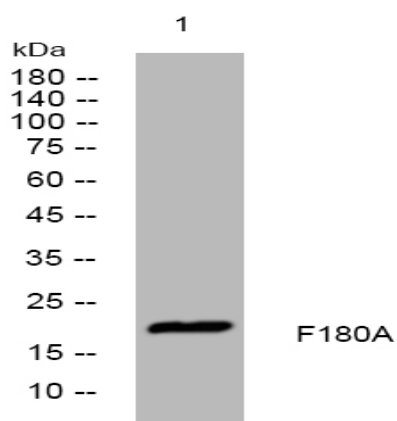


F180A rabbit pAb

Catalog No :	YT7339
Reactivity :	Human;Mouse
Applications :	WB
Target :	F180A
Gene Name :	FAM180A UNQ1940/PRO4423
Protein Name :	F180A
Human Gene Id :	389558
Human Swiss Prot No :	Q6UWF9
Mouse Gene Id :	208164
Mouse Swiss Prot No :	Q8BR21
Immunogen :	Synthesized peptide derived from human F180A AA range: 33-83
Specificity :	This antibody detects endogenous levels of F180A at Human/Mouse
Formulation :	Liquid in PBS containing 50% glycerol, 0.5% BSA and 0.02% sodium azide.
Source :	Polyclonal, Rabbit,IgG
Dilution :	WB 1:500-2000
Purification :	The antibody was affinity-purified from rabbit antiserum by affinity-chromatography using epitope-specific immunogen.
Concentration :	1 mg/ml
Storage Stability :	-15°C to -25°C/1 year(Do not lower than -25°C)

Molecularweight :	19kD
Function :	similarity:Belongs to the FAM180 family.,
Subcellular Location :	Secreted .
Sort :	5823
No4 :	1
Host :	Rabbit
Modifications :	Unmodified

Products Images



Western blot analysis of lysates from HpeG2 cells, primary antibody was diluted at 1:1000, 4° over night