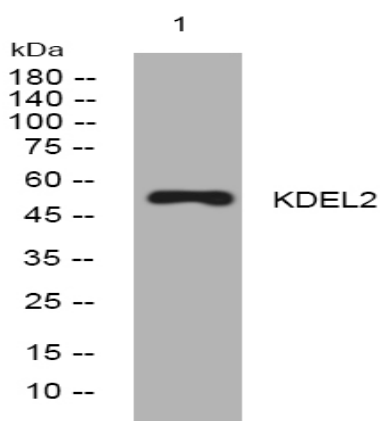


KDEL2 rabbit pAb

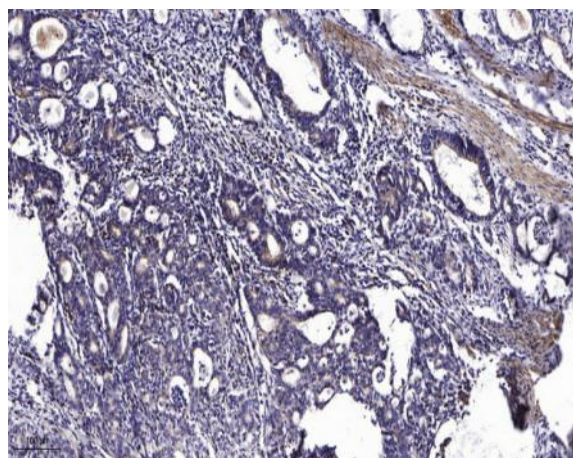
Catalog No :	YT7337
Reactivity :	Human;Rat
Applications :	WB;ELISA;IHC
Target :	KDEL2
Gene Name :	KDEL2 UNQ1904/PRO4350
Protein Name :	KDEL2
Human Gene Id :	143888
Human Swiss Prot No :	Q7Z4H8
Rat Gene Id :	315664
Rat Swiss Prot No :	Q566E5
Immunogen :	Synthesized peptide derived from human KDEL2 AA range: 414-464
Specificity :	This antibody detects endogenous levels of KDEL2 at Human/Rat
Formulation :	Liquid in PBS containing 50% glycerol, 0.5% BSA and 0.02% sodium azide.
Source :	Polyclonal, Rabbit,IgG
Dilution :	WB 1:500-2000;IHC 1:50-300; ELISA 2000-20000
Purification :	The antibody was affinity-purified from rabbit antiserum by affinity-chromatography using epitope-specific immunogen.
Concentration :	1 mg/ml
Storage Stability :	-15°C to -25°C/1 year(Do not lower than -25°C)

Molecularweight :	56kD
Function :	similarity:Belongs to the KDELC family.,similarity:Contains 1 filamin repeat.,
Subcellular Location :	Endoplasmic reticulum lumen .
Sort :	8879
No4 :	1
Host :	Rabbit
Modifications :	Unmodified

Products Images



Western blot analysis of lysates from U2OS cells, primary antibody was diluted at 1:1000, 4° over night



Immunohistochemical analysis of paraffin-embedded human Gastric adenocarcinoma. 1, Antibody was diluted at 1:200(4° overnight). 2, Tris-EDTA,pH9.0 was used for antigen retrieval. 3,Secondary antibody was diluted at 1:200(room temperature, 45min).