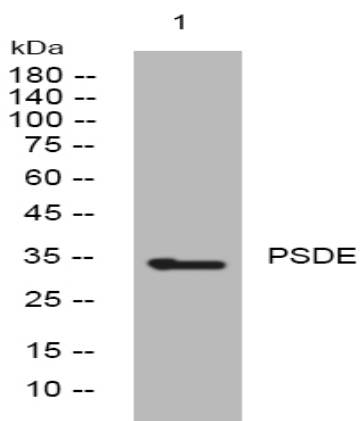


PSDE rabbit pAb

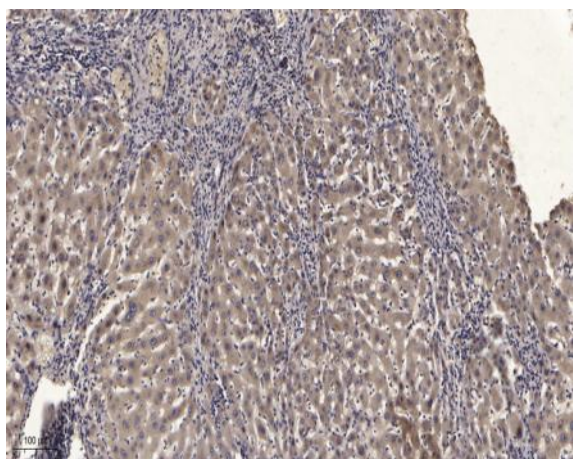
Catalog No :	YT7334
Reactivity :	Human;Mouse
Applications :	WB;IHC
Target :	PSDE
Fields :	>>Proteasome;>>Alzheimer disease;>>Parkinson disease;>>Amyotrophic lateral sclerosis;>>Huntington disease;>>Spinocerebellar ataxia;>>Prion disease;>>Pathways of neurodegeneration - multiple diseases;>>Epstein-Barr virus infection
Gene Name :	PSMD14 POH1
Protein Name :	PSDE
Human Gene Id :	10213
Human Swiss Prot No :	O00487
Mouse Gene Id :	59029
Mouse Swiss Prot No :	O35593
Immunogen :	Synthesized peptide derived from human PSDE AA range: 152-202
Specificity :	This antibody detects endogenous levels of PSDE at Human/Mouse
Formulation :	Liquid in PBS containing 50% glycerol, 0.5% BSA and 0.02% sodium azide.
Source :	Polyclonal, Rabbit,IgG
Dilution :	WB 1:500-2000;IHC 1:50-300
Purification :	The antibody was affinity-purified from rabbit antiserum by affinity-chromatography using epitope-specific immunogen.

Concentration :	1 mg/ml
Storage Stability :	-15°C to -25°C/1 year(Do not lower than -25°C)
Molecularweight :	34kD
Background :	<p>This gene encodes a component of the 26S proteasome. The 26S proteasome is a large multiprotein complex that catalyzes the degradation of ubiquitinated intracellular proteins. The encoded protein is a component of the 19S regulatory cap complex of the 26S proteasome and mediates substrate deubiquitination. A pseudogene of this gene is also located on the long arm of chromosome 2. [provided by RefSeq, Feb 2012],</p>
Function :	<p>catalytic activity:Ubiquitin C-terminal thioester + H(2)O = ubiquitin + a thiol.,function:Metalloprotease component of the 26S proteasome that specifically cleaves 'Lys-63'-linked polyubiquitin chains. The 26S proteasome is involved in the ATP-dependent degradation of ubiquitinated proteins. The function of the 'Lys-63'-specific deubiquitination of the proteasome is unclear.,similarity:Belongs to the peptidase M67A family. PSMD14 subfamily.,similarity:Contains 1 MPN (JAB/Mov34) domain.,subunit:Component of the 19S regulatory cap of the 26S proteasome.,tissue specificity:Widely expressed. Highest levels in heart and skeletal muscle.,</p>
Subcellular Location :	<p>proteasome complex,nucleus,nucleoplasm,cytosol,proteasome regulatory particle, lid subcomplex,proteasome accessory complex,cytosolic proteasome complex,extracellular exosome,</p>
Expression :	<p>Widely expressed. Highest levels in heart and skeletal muscle.</p>
Sort :	13112
No4 :	1
Host :	Rabbit
Modifications :	Unmodified

Products Images



Western blot analysis of lysates from Hela cells, primary antibody was diluted at 1:1000, 4° over night



Immunohistochemical analysis of paraffin-embedded human liver cancer. 1, Antibody was diluted at 1:200(4° overnight). 2, Tris-EDTA,pH9.0 was used for antigen retrieval. 3,Secondary antibody was diluted at 1:200(room temperature, 45min).