

## ARC1B rabbit pAb

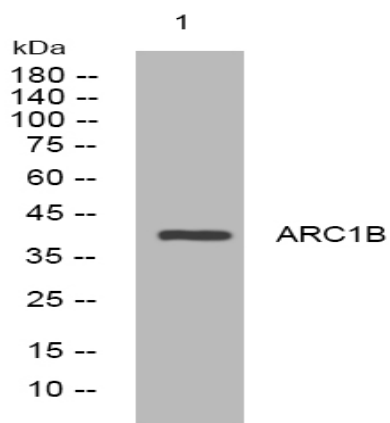
<b>Catalog No :</b>	YT7331
<b>Reactivity :</b>	Human;Mouse;Rat
<b>Applications :</b>	WB
<b>Target :</b>	ARC1B
<b>Fields :</b>	>>Endocytosis;>>Tight junction;>>Fc gamma R-mediated phagocytosis;>>Regulation of actin cytoskeleton;>>Bacterial invasion of epithelial cells;>>Pathogenic Escherichia coli infection;>>Shigellosis;>>Salmonella infection;>>Yersinia infection
<b>Gene Name :</b>	ARPC1B ARC41
<b>Protein Name :</b>	ARC1B
<b>Human Gene Id :</b>	10095
<b>Human Swiss Prot No :</b>	O15143
<b>Mouse Gene Id :</b>	11867
<b>Mouse Swiss Prot No :</b>	Q9WV32
<b>Rat Gene Id :</b>	54227
<b>Rat Swiss Prot No :</b>	O88656
<b>Immunogen :</b>	Synthesized peptide derived from human ARC1B AA range: 27-77
<b>Specificity :</b>	This antibody detects endogenous levels of ARC1B at Human/Mouse/Rat
<b>Formulation :</b>	Liquid in PBS containing 50% glycerol, 0.5% BSA and 0.02% sodium azide.
<b>Source :</b>	Polyclonal, Rabbit,IgG
<b>Dilution :</b>	WB 1:500-2000

---

<b>Purification :</b>	The antibody was affinity-purified from rabbit antiserum by affinity-chromatography using epitope-specific immunogen.
<b>Concentration :</b>	1 mg/ml
<b>Storage Stability :</b>	-15°C to -25°C/1 year(Do not lower than -25°C)
<b>Molecularweight :</b>	41kD
<b>Background :</b>	This gene encodes one of seven subunits of the human Arp2/3 protein complex. This subunit is a member of the SOP2 family of proteins and is most similar to the protein encoded by gene ARPC1A. The similarity between these two proteins suggests that they both may function as p41 subunit of the human Arp2/3 complex that has been implicated in the control of actin polymerization in cells. It is possible that the p41 subunit is involved in assembling and maintaining the structure of the Arp2/3 complex. Multiple versions of the p41 subunit may adapt the functions of the complex to different cell types or developmental stages. This protein also has a role in centrosomal homeostasis by being an activator and substrate of the Aurora A kinase. [provided by RefSeq, Mar 2011],
<b>Function :</b>	function:Functions as component of the Arp2/3 complex which is involved in regulation of actin polymerization and together with an activating nucleation-promoting factor (NPF) mediates the formation of branched actin networks.,similarity:Belongs to the WD repeat ARPC1 family.,similarity:Contains 6 WD repeats.,subunit:Component of the Arp2/3 complex composed of ARP2, ARP3, ARPC1B/p41-ARC, ARPC2/p34-ARC, ARPC3/p21-ARC, ARPC4/p20-ARC and ARPC5/p16-ARC.,
<b>Subcellular Location :</b>	Cytoplasm, cytoskeleton . Nucleus .
<b>Sort :</b>	2212
<b>No4 :</b>	1
<b>Host :</b>	Rabbit
<b>Modifications :</b>	Unmodified

---

## Products Images



Western blot analysis of lysates from PC-12 cells, primary antibody was diluted at 1:1000, 4° over night