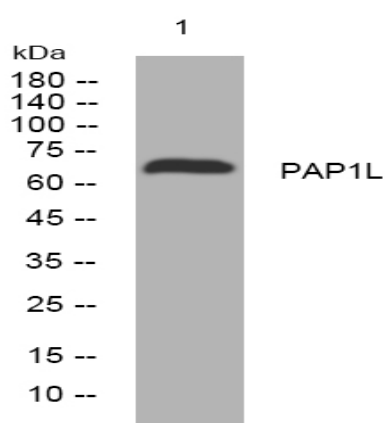


PAP1L rabbit pAb

Catalog No :	YT7327
Reactivity :	Human
Applications :	WB
Target :	PAP1L
Fields :	>>mRNA surveillance pathway;>>RNA degradation
Gene Name :	PABPC1L C20orf119
Protein Name :	PAP1L
Human Gene Id :	80336
Human Swiss Prot No :	Q4VXU2
Immunogen :	Synthesized peptide derived from human PAP1L AA range: 251-301
Specificity :	This antibody detects endogenous levels of PAP1L at Human
Formulation :	Liquid in PBS containing 50% glycerol, 0.5% BSA and 0.02% sodium azide.
Source :	Polyclonal, Rabbit,IgG
Dilution :	WB 1[?]500-2000
Purification :	The antibody was affinity-purified from rabbit antiserum by affinity-chromatography using epitope-specific immunogen.
Concentration :	1 mg/ml
Storage Stability :	-15°C to -25°C/1 year(Do not lower than -25°C)
Molecularweight :	68kD

Function :	similarity:Belongs to the polyadenylate-binding protein type-1 family.,similarity:Contains 1 PABC domain.,similarity:Contains 4 RRM (RNA recognition motif) domains.,
Subcellular Location :	extracellular exosome,
Sort :	11612
No4 :	1
Host :	Rabbit
Modifications :	Unmodified

Products Images



Western blot analysis of lysates from SW480 cells, primary antibody was diluted at 1:1000, 4° over night