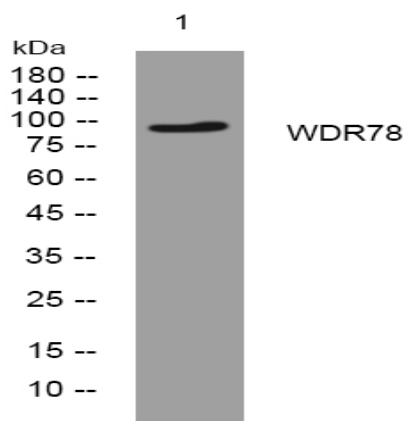


WDR78 rabbit pAb

Catalog No :	YT7326
Reactivity :	Human;Mouse;Rat
Applications :	WB
Target :	WDR78
Gene Name :	WDR78
Protein Name :	WDR78
Human Gene Id :	79819
Human Swiss Prot No :	Q5VTH9
Mouse Gene Id :	242584
Mouse Swiss Prot No :	E9PYY5
Rat Gene Id :	313417
Rat Swiss Prot No :	Q4V8G4
Immunogen :	Synthesized peptide derived from human WDR78 AA range: 281-331
Specificity :	This antibody detects endogenous levels of WDR78 at Human/Mouse/Rat
Formulation :	Liquid in PBS containing 50% glycerol, 0.5% BSA and 0.02% sodium azide.
Source :	Polyclonal, Rabbit,IgG
Dilution :	WB 1:500-2000
Purification :	The antibody was affinity-purified from rabbit antiserum by affinity-chromatography using epitope-specific immunogen.

Concentration :	1 mg/ml
Storage Stability :	-15°C to -25°C/1 year(Do not lower than -25°C)
Molecularweight :	93kD
Function :	similarity:Contains 6 WD repeats.,
Subcellular Location :	Cytoplasm, cytoskeleton, flagellum axoneme . Cytoplasm, cytoskeleton, cilium axoneme . Dynein axonemal particle .
Sort :	24270
No4 :	1
Host :	Rabbit
Modifications :	Unmodified

Products Images



Western blot analysis of lysates from SH-SY5Y cells, primary antibody was diluted at 1:1000, 4° over night