

RBM25 rabbit pAb

Catalog No :	YT7325
Reactivity :	Human;Mouse
Applications :	WB;IHC
Target :	RBM25
Fields :	>>Spliceosome
Gene Name :	RBM25 RNPC7
Protein Name :	RBM25
Human Gene Id :	58517
Human Swiss Prot No :	P49756
Mouse Gene Id :	67039
Mouse Swiss Prot No :	B2RY56
Immunogen :	Synthesized peptide derived from human RBM25 AA range: 763-813
Specificity :	This antibody detects endogenous levels of RBM25 at Human/Mouse
Formulation :	Liquid in PBS containing 50% glycerol, 0.5% BSA and 0.02% sodium azide.
Source :	Polyclonal, Rabbit,IgG
Dilution :	WB 1:500-2000;IHC 1:50-300
Purification :	The antibody was affinity-purified from rabbit antiserum by affinity-chromatography using epitope-specific immunogen.
Concentration :	1 mg/ml

Storage Stability : -15°C to -25°C/1 year(Do not lower than -25°C)

Molecularweight : 93kD

Function : PTM:Sumoylated.,sequence caution:Contaminating sequence. Potential poly-A sequence.,sequence caution:Translation N-terminally extended.,similarity:Contains 1 PWI domain.,similarity:Contains 1 RRM (RNA recognition motif) domain.,subcellular location:Detected predominantly in nuclear speckles. Cytoplasmic localization is faint.,subunit:Interacts with SRRM1. Specifically associates with functional splicing complexes, including Sm proteins and U1, U2, U4, U5 and U6 snRNAs. Associates with exon junction complex (EJC) proteins, including APEX1, BAT1, NCBP1, RBM8A and RNPS1. Interaction with NCBP1 is RNA-dependent.,

Subcellular Location : Nucleus speckle. Cytoplasm. Colocalizes predominantly, with SFRS2 and LUC7L3 splicing factors, in nuclear speckles. Cytoplasmic localization is faint.

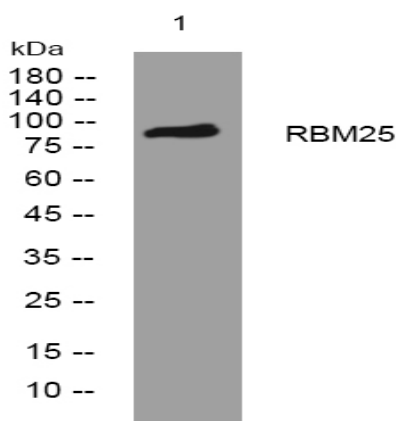
Sort : 14048

No4 : 1

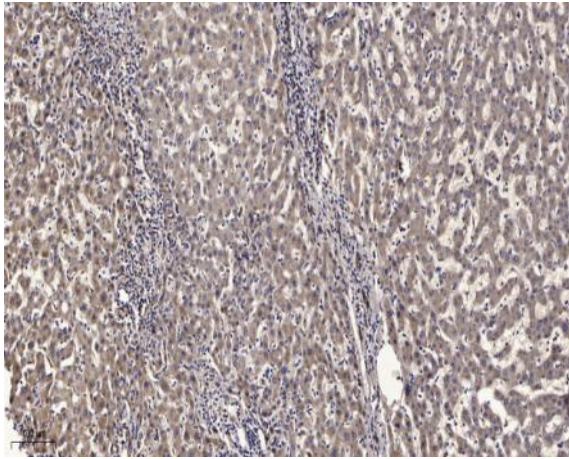
Host : Rabbit

Modifications : Unmodified

Products Images



Western blot analysis of lysates from VEC cells, primary antibody was diluted at 1:1000, 4° over night



Immunohistochemical analysis of paraffin-embedded human liver cancer. 1, Antibody was diluted at 1:200(4° overnight). 2, Tris-EDTA,pH9.0 was used for antigen retrieval. 3,Secondary antibody was diluted at 1:200(room temperature, 45min).