

PPR17 rabbit pAb

Catalog No :	YT7324
Reactivity :	Human;Mouse
Applications :	WB;IHC
Target :	PPR17
Fields :	>>Long-term depression
Gene Name :	PPP1R17 C7orf16 GSBS
Protein Name :	PPR17
Human Gene Id :	10842
Human Swiss Prot No :	O96001
Mouse Gene Id :	19051
Mouse Swiss Prot No :	Q9Z2E4
Immunogen :	Synthesized peptide derived from human PPR17 AA range: 75-125
Specificity :	This antibody detects endogenous levels of PPR17 at Human/Mouse
Formulation :	Liquid in PBS containing 50% glycerol, 0.5% BSA and 0.02% sodium azide.
Source :	Polyclonal, Rabbit,IgG
Dilution :	WB 1:500-2000;IHC 1:50-300
Purification :	The antibody was affinity-purified from rabbit antiserum by affinity-chromatography using epitope-specific immunogen.
Concentration :	1 mg/ml

Storage Stability : -15°C to -25°C/1 year(Do not lower than -25°C)

Molecularweight : 17kD

Background : The protein encoded by this gene is found primarily in cerebellar Purkinje cells, where it functions as a protein phosphatase inhibitor. The encoded protein is a substrate for cGMP-dependent protein kinase. An allele of this gene was discovered that increases susceptibility to hypercholesterolemia. Two transcript variants encoding different isoforms have been found for this gene. [provided by RefSeq, Jul 2010],

Function : function:Inhibits protein phosphatase-2A and protein phosphatase-1.,PTM:Substrate for cGMP-dependent protein kinase.,tissue specificity:Highly expressed in cerebellum.,

Subcellular Location : intracellular,

Expression : Highly expressed in cerebellum.

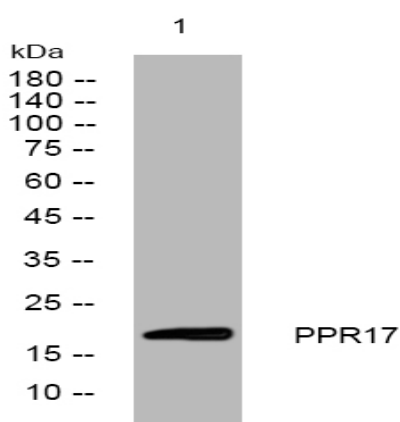
Sort : 12963

No4 : 1

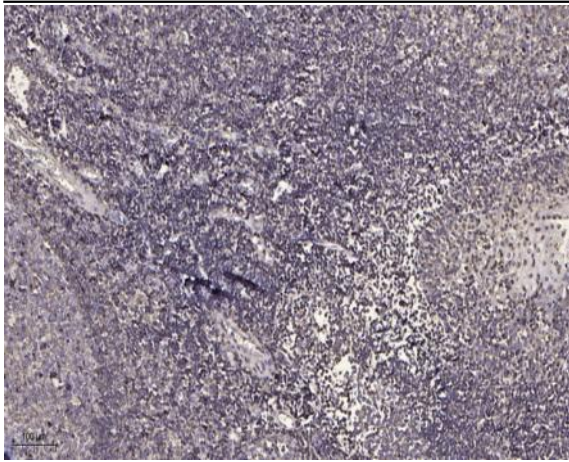
Host : Rabbit

Modifications : Unmodified

Products Images



Western blot analysis of lysates from U2OS cells, primary antibody was diluted at 1:1000, 4° over night



Immunohistochemical analysis of paraffin-embedded human tonsil. 1, Antibody was diluted at 1:200(4° overnight). 2, Tris-EDTA,pH9.0 was used for antigen retrieval. 3,Secondary antibody was diluted at 1:200(room temperature, 45min).