

## PRR22 rabbit pAb

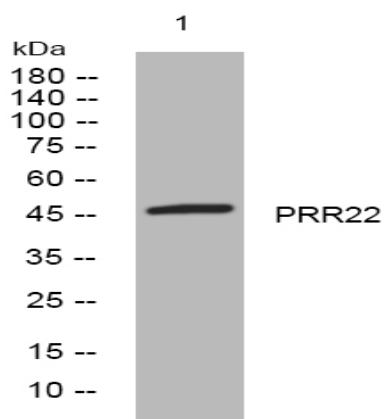
|                              |   |
|------------------------------|---|
| <b>Catalog No :</b>          | YT7320  |
| <b>Reactivity :</b>          | Human   |
| <b>Applications :</b>        | WB  |
| <b>Target :</b>              | PRR22   |
| <b>Gene Name :</b>           | PRR22   |
| <b>Protein Name :</b>        | PRR22   |
| <b>Human Gene Id :</b>       | 163154  |
| <b>Human Swiss Prot No :</b> | Q8IZ63  |
| <b>Immunogen :</b>           | Synthesized peptide derived from human PRR22 AA range: 175-225  |
| <b>Specificity :</b>         | This antibody detects endogenous levels of PRR22 at Human   |
| <b>Formulation :</b>         | Liquid in PBS containing 50% glycerol, 0.5% BSA and 0.02% sodium azide.   |
| <b>Source :</b>              | Polyclonal, Rabbit,IgG  |
| <b>Dilution :</b>            | WB 1[?]500-2000   |
| <b>Purification :</b>        | The antibody was affinity-purified from rabbit antiserum by affinity-chromatography using epitope-specific immunogen. |
| <b>Concentration :</b>       | 1 mg/ml   |
| <b>Storage Stability :</b>   | -15 °C to -25 °C/1 year(Do not lower than -25 °C)   |
| <b>Molecularweight :</b>     | 46kD  |
| <b>Sort :</b>                | 13084   |

---

|                        |                   |
|------------------------|-------------------|
| <b>No4 :</b>           | <u>1</u>          |
| <b>Host :</b>          | <u>Rabbit</u>     |
| <b>Modifications :</b> | <u>Unmodified</u> |

---

## Products Images



Western blot analysis of lysates from HEK293 cells, primary antibody was diluted at 1:1000, 4° over night