

## MPDZ rabbit pAb

<b>Catalog No :</b>	YT7318
<b>Reactivity :</b>	Human;Mouse;Rat
<b>Applications :</b>	WB;ELISA;IHC
<b>Target :</b>	MPDZ
<b>Fields :</b>	>>Tight junction
<b>Gene Name :</b>	MPDZ MUPP1
<b>Protein Name :</b>	MPDZ
<b>Human Gene Id :</b>	8777
<b>Human Swiss Prot No :</b>	O75970
<b>Mouse Gene Id :</b>	17475
<b>Mouse Swiss Prot No :</b>	Q8VBX6
<b>Rat Gene Id :</b>	29365
<b>Rat Swiss Prot No :</b>	O55164
<b>Immunogen :</b>	Synthesized peptide derived from human MPDZ AA range: 1564-1614
<b>Specificity :</b>	This antibody detects endogenous levels of MPDZ at Human/Mouse/Rat
<b>Formulation :</b>	Liquid in PBS containing 50% glycerol, 0.5% BSA and 0.02% sodium azide.
<b>Source :</b>	Polyclonal, Rabbit,IgG
<b>Dilution :</b>	WB 1:500-2000;IHC 1:50-300; ELISA 2000-20000
<b>Purification :</b>	The antibody was affinity-purified from rabbit antiserum by affinity-

---

chromatography using epitope-specific immunogen.

---

**Concentration :** 1 mg/ml

---

**Storage Stability :** -15°C to -25°C/1 year(Do not lower than -25°C)

---

**Molecularweight :** 228kD

---

**Background :** The protein encoded by this gene has multiple PDZ domains, which are hallmarks of protein-protein interactions. The encoded protein is known to interact with the HTR2C receptor and may cause it to clump at the cell surface. Multiple transcript variants encoding different isoforms have been found for this gene. [provided by RefSeq, Aug 2015],

---

**Function :** similarity:Contains 13 PDZ (DHR) domains.,

---

**Subcellular Location :** Cell membrane; Peripheral membrane protein; Cytoplasmic side. Apical cell membrane; Peripheral membrane protein; Cytoplasmic side. Cell junction, synapse, postsynaptic density. Cell projection, dendrite. Cell junction, tight junction. Cell junction, synapse. Cell junction, synapse, synaptosome. Colocalizes with HTR2C on the apical membrane of epithelial choroid plexus cells (By similarity). Highly enriched in postsynaptic densities (PSD). Localized to punctae on dendrites of hippocampal neurons and colocalizes with the synaptic marker DLG4. Localized mainly in the Schmidt-Lanterman incisures of myelinating Schwann cells (By similarity). In the retina, localizes to the sub-apical region adjacent to the adherens junction complex at the outer limiting membrane. Enriched at the tight junctions

---

**Expression :** Expressed in heart, brain, placenta, liver, skeletal muscle, kidney and pancreas.

---

**Sort :** 10187

---

**No4 :** 1

---

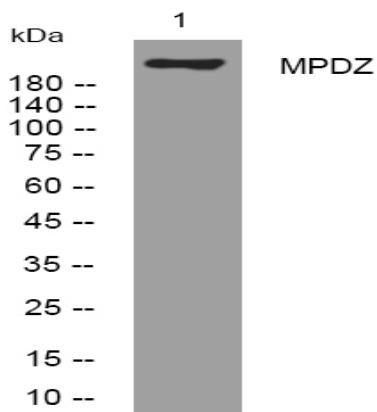
**Host :** Rabbit

---

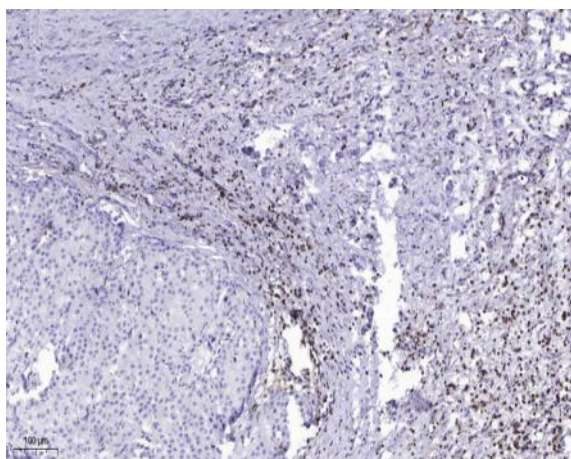
**Modifications :** Unmodified

---

**Products Images**



Western blot analysis of lysates from MCF-7 cells, primary antibody was diluted at 1:1000, 4° over night



Immunohistochemical analysis of paraffin-embedded human liver cancer. 1, Antibody was diluted at 1:200(4° overnight). 2, Tris-EDTA,pH9.0 was used for antigen retrieval. 3,Secondary antibody was diluted at 1:200(room temperature, 45min).