

## NNAT rabbit pAb

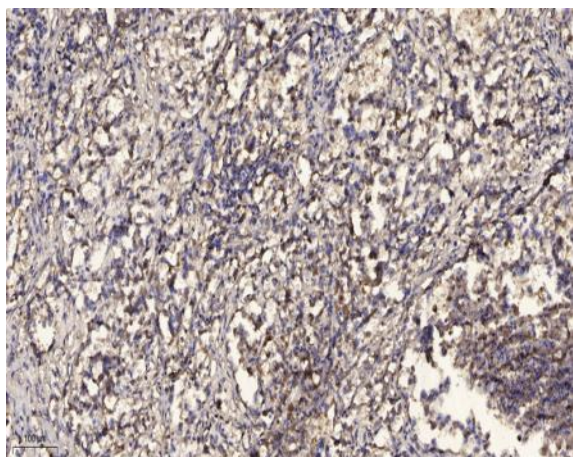
<b>Catalog No :</b>	YT7317
<b>Reactivity :</b>	Human;Mouse;Rat
<b>Applications :</b>	IHC;IF
<b>Target :</b>	NNAT
<b>Gene Name :</b>	NNAT
<b>Protein Name :</b>	NNAT
<b>Human Gene Id :</b>	4826
<b>Human Swiss Prot No :</b>	Q16517
<b>Mouse Gene Id :</b>	18111
<b>Mouse Swiss Prot No :</b>	Q61979
<b>Rat Gene Id :</b>	94270
<b>Rat Swiss Prot No :</b>	Q62649
<b>Immunogen :</b>	Synthesized peptide derived from human NNAT AA range: 17-67
<b>Specificity :</b>	This antibody detects endogenous levels of NNAT at Human/Mouse/Rat
<b>Formulation :</b>	Liquid in PBS containing 50% glycerol, 0.5% BSA and 0.02% sodium azide.
<b>Source :</b>	Polyclonal, Rabbit,IgG
<b>Dilution :</b>	IHC 1:50-200. IF 1:50-200
<b>Purification :</b>	The antibody was affinity-purified from rabbit antiserum by affinity-chromatography using epitope-specific immunogen.

---

<b>Concentration :</b>	1 mg/ml
<b>Storage Stability :</b>	-15°C to -25°C/1 year(Do not lower than -25°C)
<b>Molecularweight :</b>	9kD
<b>Background :</b>	The protein encoded by this gene is a proteolipid that may be involved in the regulation of ion channels during brain development. The encoded protein may also play a role in forming and maintaining the structure of the nervous system. This gene is found within an intron of another gene, bladder cancer associated protein, but on the opposite strand. This gene is imprinted and is expressed only from the paternal allele. [provided by RefSeq, Apr 2016],
<b>Function :</b>	developmental stage:Abundant in 18-24 week old fetal brain. Postnatally its expression decline and only minimal levels were present in adulthood.,function:May participate in the maintenance of segment identity in the hindbrain and pituitary development, and maturation or maintenance of the overall structure of the nervous system. May function as a regulatory subunit of ion channels.,similarity:Belongs to the neuronatin family.,
<b>Subcellular Location :</b>	cytoplasm,
<b>Sort :</b>	10911
<b>No4 :</b>	1
<b>Host :</b>	Rabbit
<b>Modifications :</b>	Unmodified

---

## Products Images



Immunohistochemical analysis of paraffin-embedded human Squamous cell carcinoma of lung. 1, Antibody was diluted at 1:200(4° overnight). 2, Tris-EDTA,pH9.0 was used for antigen retrieval. 3,Secondary antibody was diluted at 1:200(room temperature, 45min).