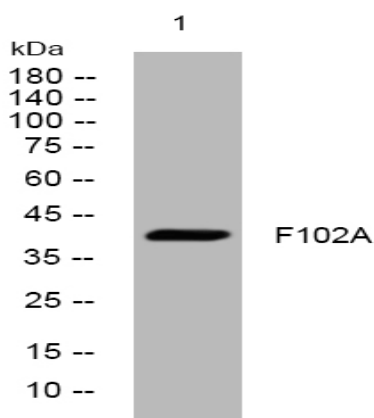


F102A rabbit pAb

Catalog No :	YT7315
Reactivity :	Human;Mouse
Applications :	WB
Target :	F102A
Gene Name :	FAM102A C9orf132 EEIG1
Protein Name :	F102A
Human Gene Id :	399665
Human Swiss Prot No :	Q5T9C2
Mouse Gene Id :	98952
Mouse Swiss Prot No :	Q78T81
Immunogen :	Synthesized peptide derived from human F102A AA range: 72-122
Specificity :	This antibody detects endogenous levels of F102A at Human/Mouse
Formulation :	Liquid in PBS containing 50% glycerol, 0.5% BSA and 0.02% sodium azide.
Source :	Polyclonal, Rabbit,IgG
Dilution :	WB 1:500-2000
Purification :	The antibody was affinity-purified from rabbit antiserum by affinity-chromatography using epitope-specific immunogen.
Concentration :	1 mg/ml
Storage Stability :	-15°C to -25°C/1 year(Do not lower than -25°C)

Molecularweight : 42kD**Function :** function:May play a role in estrogen action.,induction:By 17-beta-estradiol but also by a group of natural and synthetic estrogens as well as by estrogenic environmental compounds. Repressed by the antiestrogen 4-hydroxy-tamoxifen.,similarity:Belongs to the FAM102 family.,**Sort :** 5810**No4 :** 1**Host :** Rabbit**Modifications :** Unmodified

Products Images



Western blot analysis of lysates from HpeG2 cells, primary antibody was diluted at 1:1000, 4° over night