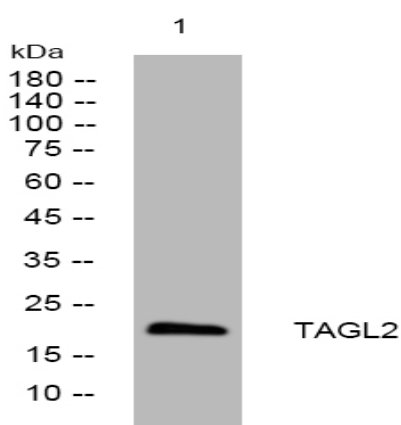


TAGL2 rabbit pAb

Catalog No :	YT7313
Reactivity :	Human;Mouse;Rat
Applications :	WB
Target :	TAGL2
Gene Name :	TAGLN2 KIAA0120 CDABP0035
Protein Name :	TAGL2
Human Gene Id :	8407
Human Swiss Prot No :	P37802
Mouse Gene Id :	21346
Mouse Swiss Prot No :	Q9WVA4
Rat Gene Id :	304983
Rat Swiss Prot No :	Q5XFX0
Immunogen :	Synthesized peptide derived from human TAGL2 AA range: 90-140
Specificity :	This antibody detects endogenous levels of TAGL2 at Human/Mouse/Rat
Formulation :	Liquid in PBS containing 50% glycerol, 0.5% BSA and 0.02% sodium azide.
Source :	Polyclonal, Rabbit,IgG
Dilution :	WB 1:500-2000
Purification :	The antibody was affinity-purified from rabbit antiserum by affinity-chromatography using epitope-specific immunogen.

Concentration :	1 mg/ml
Storage Stability :	-15°C to -25°C/1 year(Do not lower than -25°C)
Molecularweight :	22kD
Background :	The protein encoded by this gene is similar to the protein transgelin, which is one of the earliest markers of differentiated smooth muscle. The specific function of this protein has not yet been determined, although it is thought to be a tumor suppressor. Multiple transcript variants encoding different isoforms have been found for this gene. [provided by RefSeq, Mar 2013],
Function :	similarity:Belongs to the calponin family.,similarity:Contains 1 calponin-like repeat.,similarity:Contains 1 CH (calponin-homology) domain.,
Subcellular Location :	cell-cell adherens junction,vesicle,extracellular exosome,
Expression :	Expressed in epididymis (at protein level).
Sort :	16897
No4 :	1
Host :	Rabbit
Modifications :	Unmodified

Products Images



Western blot analysis of lysates from HCT116 cells, primary antibody was diluted at 1:1000, 4° over night