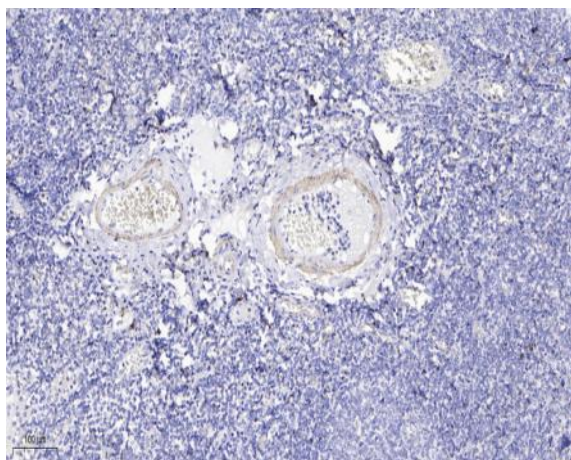


COLL2 rabbit pAb

Catalog No :	YT7308
Reactivity :	Human;Mouse;Rat
Applications :	IHC;IF
Target :	COLL2
Gene Name :	CLPSL2 C6orf126 UNQ3045/PRO9861
Protein Name :	COLL2
Human Gene Id :	389383
Human Swiss Prot No :	Q6UWE3
Mouse Gene Id :	328788
Mouse Swiss Prot No :	Q3UW21
Rat Gene Id :	689425
Rat Swiss Prot No :	D3ZVN1
Immunogen :	Synthesized peptide derived from human COLL2 AA range: 37-87
Specificity :	This antibody detects endogenous levels of COLL2 at Human/Mouse/Rat
Formulation :	Liquid in PBS containing 50% glycerol, 0.5% BSA and 0.02% sodium azide.
Source :	Polyclonal, Rabbit,IgG
Dilution :	IHC 1:50-200. IF 1:50-200
Purification :	The antibody was affinity-purified from rabbit antiserum by affinity-chromatography using epitope-specific immunogen.

Concentration :	1 mg/ml
Storage Stability :	-15°C to -25°C/1 year(Do not lower than -25°C)
Molecularweight :	11kD
Function :	similarity:Belongs to the colipase family.,
Subcellular Location :	Secreted .
Sort :	4401
No4 :	1
Host :	Rabbit
Modifications :	Unmodified

Products Images



Immunohistochemical analysis of paraffin-embedded human tonsil. 1, Antibody was diluted at 1:200(4° overnight). 2, Tris-EDTA,pH9.0 was used for antigen retrieval. 3,Secondary antibody was diluted at 1:200(room temperature, 30min).