

FKB10 rabbit pAb

Catalog No :	YT7304
Reactivity :	Human;Mouse
Applications :	WB
Target :	FKB10
Gene Name :	FKBP10 FKBP65 PSEC0056
Protein Name :	FKB10
Human Gene Id :	60681
Human Swiss Prot No :	Q96AY3
Mouse Gene Id :	14230
Mouse Swiss Prot No :	Q61576
Immunogen :	Synthesized peptide derived from human FKB10 AA range: 339-389
Specificity :	This antibody detects endogenous levels of FKB10 at Human/Mouse
Formulation :	Liquid in PBS containing 50% glycerol, 0.5% BSA and 0.02% sodium azide.
Source :	Polyclonal, Rabbit,IgG
Dilution :	WB 1:500-2000
Purification :	The antibody was affinity-purified from rabbit antiserum by affinity-chromatography using epitope-specific immunogen.
Concentration :	1 mg/ml
Storage Stability :	-15°C to -25°C/1 year(Do not lower than -25°C)

Molecularweight : 64kD

Background : The protein encoded by this gene belongs to the FKBP-type peptidyl-prolyl cis/trans isomerase (PPIase) family. This protein localizes to the endoplasmic reticulum and acts as a molecular chaperone. Alternatively spliced variants encoding different isoforms have been reported, but their biological validity has not been determined.[provided by RefSeq, Nov 2009],

Function : catalytic activity:Peptidylproline (omega=180) = peptidylproline (omega=0).,enzyme regulation:Inhibited by both FK506 and rapamycin, but not by cyclosporin A.,function:PPIases accelerate the folding of proteins during protein synthesis.,PTM:Glycosylated and phosphorylated.,similarity:Belongs to the FKBP-type PPIase family.,similarity:Contains 2 EF-hand domains.,similarity:Contains 4 PPIase FKBP-type domains.,

Subcellular Location : Endoplasmic reticulum lumen .

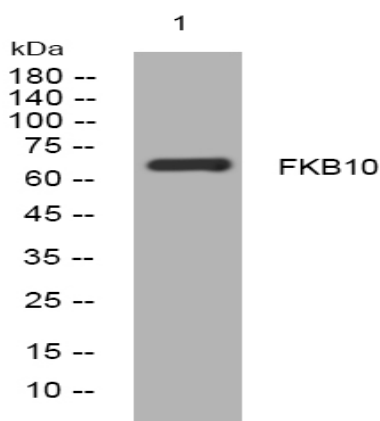
Sort : 6127

No4 : 1

Host : Rabbit

Modifications : Unmodified

Products Images



Western blot analysis of lysates from K562 cells, primary antibody was diluted at 1:1000, 4° over night