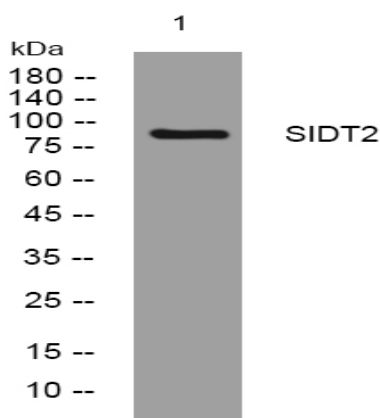


## SIDT2 rabbit pAb

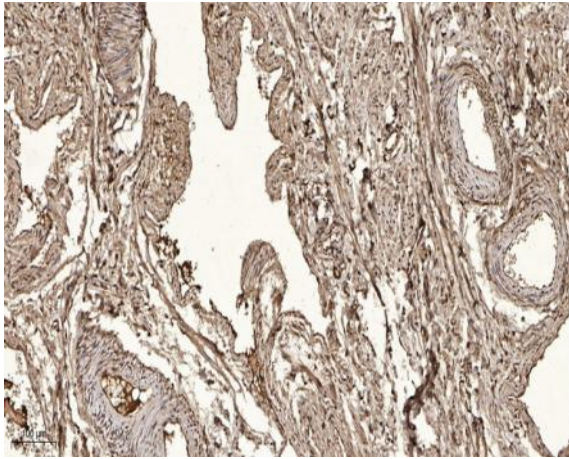
<b>Catalog No :</b>	YT7303
<b>Reactivity :</b>	Human;Mouse;Rat
<b>Applications :</b>	WB;ELISA;IHC
<b>Target :</b>	SIDT2
<b>Gene Name :</b>	SIDT2 CGI-40 PSEC0072 UNQ685/PRO1325
<b>Protein Name :</b>	SIDT2
<b>Human Gene Id :</b>	51092
<b>Human Swiss Prot No :</b>	Q8NBJ9
<b>Mouse Gene Id :</b>	214597
<b>Mouse Swiss Prot No :</b>	Q8CIF6
<b>Rat Gene Id :</b>	315617
<b>Rat Swiss Prot No :</b>	D3ZEH5
<b>Immunogen :</b>	Synthesized peptide derived from human SIDT2 AA range: 393-443
<b>Specificity :</b>	This antibody detects endogenous levels of SIDT2 at Human/Mouse/Rat
<b>Formulation :</b>	Liquid in PBS containing 50% glycerol, 0.5% BSA and 0.02% sodium azide.
<b>Source :</b>	Polyclonal, Rabbit,IgG
<b>Dilution :</b>	WB 1:500-2000;IHC 1:50-300; ELISA 2000-20000
<b>Purification :</b>	The antibody was affinity-purified from rabbit antiserum by affinity-chromatography using epitope-specific immunogen.

<b>Concentration :</b>	1 mg/ml
<b>Storage Stability :</b>	-15°C to -25°C/1 year(Do not lower than -25°C)
<b>Molecularweight :</b>	92kD
<b>Function :</b>	similarity:Belongs to the SID1 family.,
<b>Subcellular Location :</b>	Lysosome membrane ; Multi-pass membrane protein . Cell membrane . Mainly localizes to lysosomes and only partly to the plasma membrane (PubMed:28277980). Lysosomal localization is required for SIDT2-mediated intracellular degradation of endogenous RNA (By similarity). .
<b>Sort :</b>	16329
<b>No4 :</b>	1
<b>Host :</b>	Rabbit
<b>Modifications :</b>	Unmodified

## Products Images



Western blot analysis of lysates from MCF-7 cells, primary antibody was diluted at 1:1000, 4° over night



Immunohistochemical analysis of paraffin-embedded human oophoroma. 1, Antibody was diluted at 1:200(4° overnight). 2, Tris-EDTA,pH9.0 was used for antigen retrieval. 3,Secondary antibody was diluted at 1:200(room temperature, 45min).