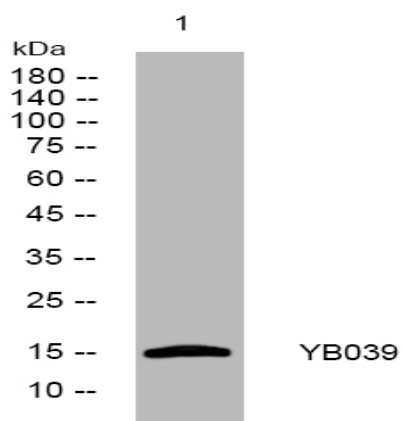


Mitoregulin rabbit pAb

| | |
|------------------------------|---|
| Catalog No : | YT7302 |
| Reactivity : | Human;Mouse |
| Applications : | WB |
| Target : | YB039 |
| Gene Name : | LINC00116 NCRNA00116 MTLN |
| Protein Name : | YB039 Mitoregulin |
| Human Swiss Prot No : | Q8NCU8 |
| Mouse Swiss Prot No : | Q8BT35 |
| Immunogen : | Synthesized peptide derived from human YB039 AA:20-40 |
| Specificity : | This antibody detects endogenous levels of YB039 at Human/Mouse |
| Formulation : | Liquid in PBS containing 50% glycerol, 0.5% BSA and 0.02% sodium azide. |
| Source : | Polyclonal, Rabbit,IgG |
| Dilution : | WB 1[?]500-2000 |
| Purification : | The antibody was affinity-purified from rabbit antiserum by affinity-chromatography using epitope-specific immunogen. |
| Concentration : | 1 mg/ml |
| Storage Stability : | -15°C to -25°C/1 year(Do not lower than -25°C) |
| Molecularweight : | 15kD |
| Function : | caution:It is uncertain whether Met-1 or Met-83 is the initiator., |

| | |
|-------------------------------|--|
| Subcellular Location : | Mitochondrion inner membrane ; Single-pass membrane protein . Preferentially binds to cardiolipin relative to other common cell membrane lipids. . |
| Sort : | 24378 |
| No4 : | 1 |
| Host : | Rabbit |
| Modifications : | Unmodified |

Products Images



Western blot analysis of lysates from MCF-7 cells, primary antibody was diluted at 1:1000, 4° over night