

## OVOS2 rabbit pAb

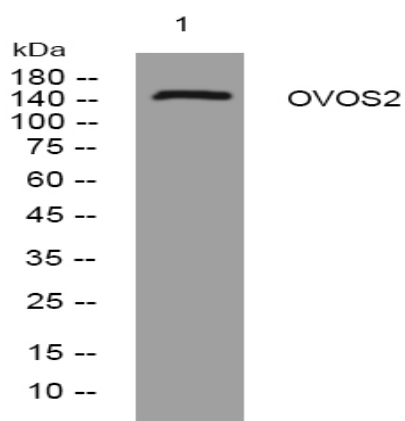
<b>Catalog No :</b>	YT7296
<b>Reactivity :</b>	Human;Rat;Mouse;
<b>Applications :</b>	WB
<b>Target :</b>	OVOS2
<b>Gene Name :</b>	OVOS2
<b>Protein Name :</b>	OVOS2
<b>Human Swiss Prot No :</b>	Q6IE36
<b>Immunogen :</b>	Synthesized peptide derived from human OVOS2 AA range: 660-710
<b>Specificity :</b>	This antibody detects endogenous levels of OVOS2 at Human
<b>Formulation :</b>	Liquid in PBS containing 50% glycerol, 0.5% BSA and 0.02% sodium azide.
<b>Source :</b>	Polyclonal, Rabbit,IgG
<b>Dilution :</b>	WB 1[?]500-2000
<b>Purification :</b>	The antibody was affinity-purified from rabbit antiserum by affinity-chromatography using epitope-specific immunogen.
<b>Concentration :</b>	1 mg/ml
<b>Storage Stability :</b>	-15°C to -25°C/1 year(Do not lower than -25°C)
<b>Molecularweight :</b>	158kD
<b>Function :</b>	function:Is able to inhibit all four classes of proteinases by a unique 'trapping' mechanism.,similarity:Belongs to the protease inhibitor I39 (alpha-2-macroglobulin) family.,subunit:Homotetramer.,
<b>Subcellular</b>	Secreted .

---

<b>Soctation :</b>	11337
<b>No4 :</b>	1
<b>Host :</b>	Rabbit
<b>Modifications :</b>	Unmodified

---

## Products Images



Western blot analysis of lysates from MDA-MB cells, primary antibody was diluted at 1:1000, 4° over night