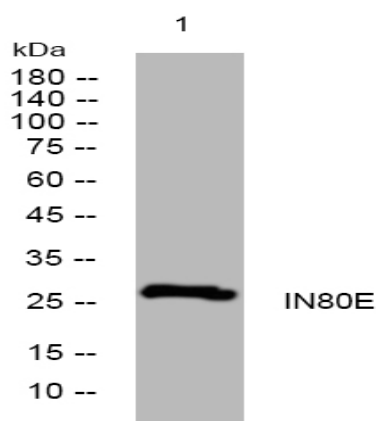


IN80E rabbit pAb

Catalog No :	YT7295
Reactivity :	Human;Rat
Applications :	WB
Target :	IN80E
Gene Name :	INO80E CCDC95
Protein Name :	IN80E
Human Gene Id :	283899
Human Swiss Prot No :	Q8NBZ0
Rat Gene Id :	293494
Rat Swiss Prot No :	Q6AYH2
Immunogen :	Synthesized peptide derived from human IN80E AA range: 45-95
Specificity :	This antibody detects endogenous levels of IN80E at Human/Rat
Formulation :	Liquid in PBS containing 50% glycerol, 0.5% BSA and 0.02% sodium azide.
Source :	Polyclonal, Rabbit,IgG
Dilution :	WB 1:500-2000
Purification :	The antibody was affinity-purified from rabbit antiserum by affinity-chromatography using epitope-specific immunogen.
Concentration :	1 mg/ml
Storage Stability :	-15°C to -25°C/1 year(Do not lower than -25°C)

Molecularweight : 27kD**Function :** subunit:Component of the chromatin-remodeling INO80 complex, at least composed of ACTL6A, ACTR5, ACTR8, RVBL1, RVBL2, INO80, INO80B, INO80C, INO80D and INO80E.,**Subcellular Location :** Nucleus .**Sort :** 8557**No4 :** 1**Host :** Rabbit**Modifications :** Unmodified

Products Images



Western blot analysis of lysates from U2OS cells, primary antibody was diluted at 1:1000, 4° over night