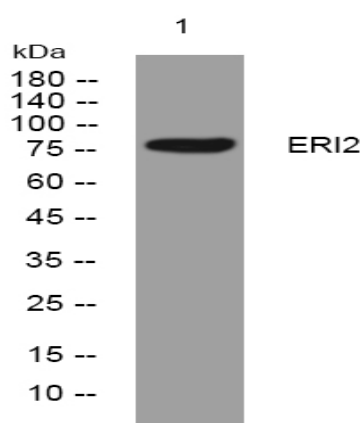


ERI2 rabbit pAb

Catalog No :	YT7294
Reactivity :	Human;Mouse
Applications :	WB
Target :	ERI2
Gene Name :	ERI2 EXOD1 KIAA1504
Protein Name :	ERI2
Human Gene Id :	112479
Human Swiss Prot No :	A8K979
Mouse Gene Id :	71151
Mouse Swiss Prot No :	Q5BKS4
Immunogen :	Synthesized peptide derived from human ERI2 AA range: 430-480
Specificity :	This antibody detects endogenous levels of ERI2 at Human/Mouse
Formulation :	Liquid in PBS containing 50% glycerol, 0.5% BSA and 0.02% sodium azide.
Source :	Polyclonal, Rabbit,IgG
Dilution :	WB 1:500-2000
Purification :	The antibody was affinity-purified from rabbit antiserum by affinity-chromatography using epitope-specific immunogen.
Concentration :	1 mg/ml
Storage Stability :	-15°C to -25°C/1 year(Do not lower than -25°C)

Molecularweight :	76kD
Sort :	5733
No4 :	1
Host :	Rabbit
Modifications :	Unmodified

Products Images



Western blot analysis of lysates from MDA-MB cells, primary antibody was diluted at 1:1000, 4° over night