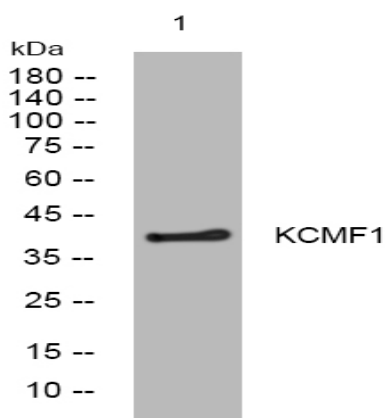


KCMF1 rabbit pAb

Catalog No :	YT7292
Reactivity :	Human;Mouse
Applications :	WB
Target :	KCMF1
Gene Name :	KCMF1 FIGC ZZZ1
Protein Name :	KCMF1
Human Gene Id :	56888
Human Swiss Prot No :	Q9P0J7
Mouse Gene Id :	74287
Mouse Swiss Prot No :	Q80UY2
Immunogen :	Synthesized peptide derived from human KCMF1 AA range: 126-176
Specificity :	This antibody detects endogenous levels of KCMF1 at Human/Mouse
Formulation :	Liquid in PBS containing 50% glycerol, 0.5% BSA and 0.02% sodium azide.
Source :	Polyclonal, Rabbit,IgG
Dilution :	WB 1:500-2000
Purification :	The antibody was affinity-purified from rabbit antiserum by affinity-chromatography using epitope-specific immunogen.
Concentration :	1 mg/ml
Storage Stability :	-15°C to -25°C/1 year(Do not lower than -25°C)

Molecularweight : 42kD**Function :** function:Has intrinsic E3 ubiquitin ligase activity and promotes ubiquitination.,induction:Up-regulated by basic fibroblast growth factor (bFGF) in gastric cancer cells.,similarity:Belongs to the KCMF1 family.,similarity:Contains 1 C2H2-type zinc finger.,similarity:Contains 1 ZZ-type zinc finger.,tissue specificity:Spleen, small intestine, ovary, peripheral blood, lung, kidney and pancreas. Expressed at low levels in the thymus, prostate, testis, colon, heart, brain, placenta and liver.,**Expression :** Spleen, small intestine, ovary, peripheral blood, lung, kidney and pancreas. Expressed at low levels in the thymus, prostate, testis, colon, heart, brain, placenta and liver.**Sort :** 8853**No4 :** 1**Host :** Rabbit**Modifications :** Unmodified

Products Images



Western blot analysis of lysates from MCF-7 cells, primary antibody was diluted at 1:1000, 4° over night