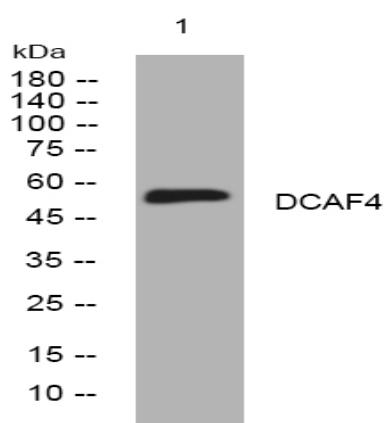


DCAF4 rabbit pAb

Catalog No :	YT7289
Reactivity :	Human
Applications :	WB
Target :	DCAF4
Gene Name :	DCAF4 WDR21 WDR21A
Protein Name :	DCAF4
Human Gene Id :	26094
Human Swiss Prot No :	Q8WV16
Immunogen :	Synthesized peptide derived from human DCAF4 AA range: 385-435
Specificity :	This antibody detects endogenous levels of DCAF4 at Human
Formulation :	Liquid in PBS containing 50% glycerol, 0.5% BSA and 0.02% sodium azide.
Source :	Polyclonal, Rabbit,IgG
Dilution :	WB 1:500-2000
Purification :	The antibody was affinity-purified from rabbit antiserum by affinity-chromatography using epitope-specific immunogen.
Concentration :	1 mg/ml
Storage Stability :	-15°C to -25°C/1 year(Do not lower than -25°C)
Molecularweight :	54kD
Background :	This gene encodes a WD repeat-containing protein that interacts with the Cul4-Ddb1 E3 ligase macromolecular complex. Multiple alternatively spliced transcript variants have been found for this gene. [provided by RefSeq, Jul 2009],

Subcellular Location :	Cul4-RING E3 ubiquitin ligase complex,
Sort :	5024
No4 :	1
Host :	Rabbit
Modifications :	Unmodified

Products Images



Western blot analysis of lysates from Jurkat cells, primary antibody was diluted at 1:1000, 4° over night