

## GDC rabbit pAb

<b>Catalog No :</b>	YT7288
<b>Reactivity :</b>	Human;Mouse;Rat
<b>Applications :</b>	WB
<b>Target :</b>	GDC
<b>Gene Name :</b>	SLC25A16 GDA
<b>Protein Name :</b>	GDC
<b>Human Gene Id :</b>	8034
<b>Human Swiss Prot No :</b>	P16260
<b>Mouse Gene Id :</b>	73132
<b>Mouse Swiss Prot No :</b>	Q8C0K5
<b>Rat Swiss Prot No :</b>	P16261
<b>Immunogen :</b>	Synthesized peptide derived from human GDC AA range: 241-291
<b>Specificity :</b>	This antibody detects endogenous levels of GDC at Human/Mouse/Rat
<b>Formulation :</b>	Liquid in PBS containing 50% glycerol, 0.5% BSA and 0.02% sodium azide.
<b>Source :</b>	Polyclonal, Rabbit,IgG
<b>Dilution :</b>	WB 1[?]500-2000
<b>Purification :</b>	The antibody was affinity-purified from rabbit antiserum by affinity-chromatography using epitope-specific immunogen.
<b>Concentration :</b>	1 mg/ml

**Storage Stability :** -15°C to -25°C/1 year(Do not lower than -25°C)

**Molecularweight :** 37kD

**Background :** This gene encodes a protein that contains three tandemly repeated mitochondrial carrier protein domains. The encoded protein is localized in the inner membrane and facilitates the rapid transport and exchange of molecules between the cytosol and the mitochondrial matrix space. This gene has a possible role in Graves&apos; disease. [provided by RefSeq, Jul 2008],

**Function :** disease:Possible role in Graves disease. This protein is recognized by IgG from patients with active Graves disease.,function:Required for the accumulation of coenzyme A in the mitochondrial matrix.,similarity:Belongs to the mitochondrial carrier family.,similarity:Contains 3 Solcar repeats.,

**Subcellular Location :** Mitochondrion inner membrane ; Multi-pass membrane protein .

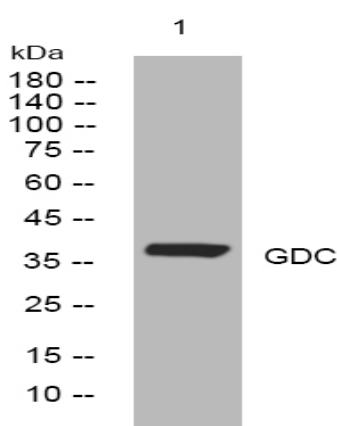
**Sort :** 6527

**No4 :** 1

**Host :** Rabbit

**Modifications :** Unmodified

## Products Images



Western blot analysis of lysates from MDA-MB cells, primary antibody was diluted at 1:1000, 4° over night