

TUSC1 rabbit pAb

Catalog No :	YT7287
Reactivity :	Human;Mouse
Applications :	WB
Target :	TUSC1
Gene Name :	TUSC1
Protein Name :	TUSC1
Human Gene Id :	286319
Human Swiss Prot No :	Q2TAM9
Mouse Gene Id :	69136
Mouse Swiss Prot No :	Q673H1
Immunogen :	Synthesized peptide derived from human TUSC1 AA range: 120-170
Specificity :	This antibody detects endogenous levels of TUSC1 at Human/Mouse
Formulation :	Liquid in PBS containing 50% glycerol, 0.5% BSA and 0.02% sodium azide.
Source :	Polyclonal, Rabbit,IgG
Dilution :	WB 1:500-2000
Purification :	The antibody was affinity-purified from rabbit antiserum by affinity-chromatography using epitope-specific immunogen.
Concentration :	1 mg/ml
Storage Stability :	-15°C to -25°C/1 year(Do not lower than -25°C)

Molecularweight : 23kD

Background : This gene is located within the region of chromosome 9p that harbors tumor suppressor genes critical in carcinogenesis. It is an intronless gene which is downregulated in non-small-cell lung cancer and small-cell lung cancer cell lines, suggesting that it may play a role in lung tumorigenesis. [provided by RefSeq, Jul 2008],

Function : tissue specificity:Widely expressed at low level. Expressed at higher level in testis, weakly expressed in muscle, colon, lung and spleen. Not detected in 3 non small cell lung carcinoma (NSCLC) cell lines with homozygous deletion of the 9p region, while it is down-regulated in 3 other tumor cell lines.,

Expression : Widely expressed at low level. Expressed at higher level in testis, weakly expressed in muscle, colon, lung and spleen. Not detected in 3 non small cell lung carcinoma (NSCLC) cell lines with homozygous deletion of the 9p region, while it is down-regulated in 3 other tumor cell lines.

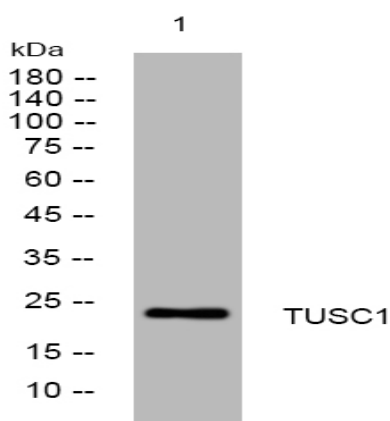
Sort : 23758

No4 : 1

Host : Rabbit

Modifications : Unmodified

Products Images



Western blot analysis of lysates from Jurkat cells, primary antibody was diluted at 1:1000, 4° over night