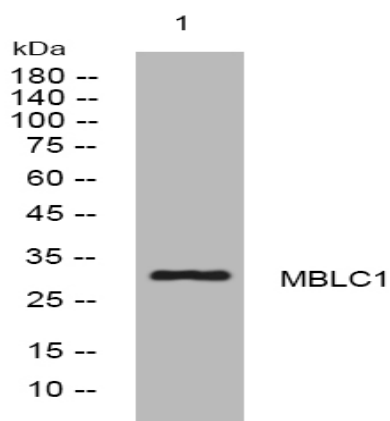


**MBLC1 rabbit pAb**

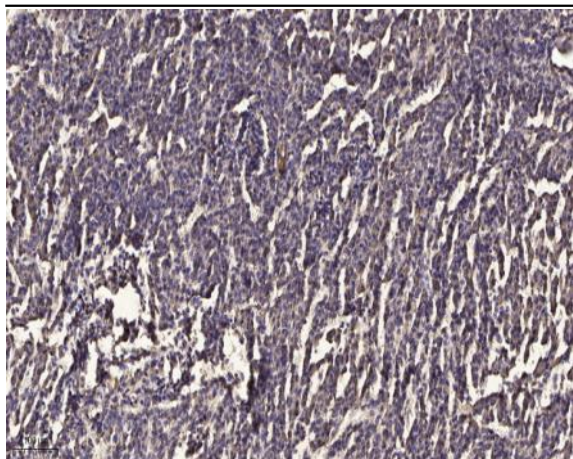
<b>Catalog No :</b>	YT7286
<b>Reactivity :</b>	Human;Mouse;Rat
<b>Applications :</b>	WB;IHC
<b>Target :</b>	MBLC1
<b>Gene Name :</b>	MBLAC1
<b>Protein Name :</b>	MBLC1
<b>Human Gene Id :</b>	255374
<b>Human Swiss Prot No :</b>	A4D2B0
<b>Mouse Gene Id :</b>	330216
<b>Mouse Swiss Prot No :</b>	Q8BWY4
<b>Rat Gene Id :</b>	304346
<b>Rat Swiss Prot No :</b>	Q6AYD1
<b>Immunogen :</b>	Synthesized peptide derived from human MBLC1 AA range: 1-51
<b>Specificity :</b>	This antibody detects endogenous levels of MBLC1 at Human/Mouse/Rat
<b>Formulation :</b>	Liquid in PBS containing 50% glycerol, 0.5% BSA and 0.02% sodium azide.
<b>Source :</b>	Polyclonal, Rabbit,IgG
<b>Dilution :</b>	WB 1:500-2000;IHC 1:50-300
<b>Purification :</b>	The antibody was affinity-purified from rabbit antiserum by affinity-chromatography using epitope-specific immunogen.

<b>Concentration :</b>	1 mg/ml
<b>Storage Stability :</b>	-15°C to -25°C/1 year(Do not lower than -25°C)
<b>Molecularweight :</b>	29kD
<b>Function :</b>	cofactor: Binds 2 zinc ions per subunit., similarity: Belongs to the metallo-beta-lactamase superfamily. Glyoxalase II family.,
<b>Subcellular Location :</b>	Cytoplasm, cytosol . Nucleus . Localizes in the nucleus during early S-phase of the cell cycle. .
<b>Sort :</b>	9433
<b>No4 :</b>	1
<b>Host :</b>	Rabbit
<b>Modifications :</b>	Unmodified

## Products Images



Western blot analysis of lysates from MCF-7 cells, primary antibody was diluted at 1:1000, 4° over night



Immunohistochemical analysis of paraffin-embedded human meningioma. 1, Antibody was diluted at 1:200(4 ° overnight). 2, Tris-EDTA,pH9.0 was used for antigen retrieval. 3,Secondary antibody was diluted at 1:200(room temperature, 45min).