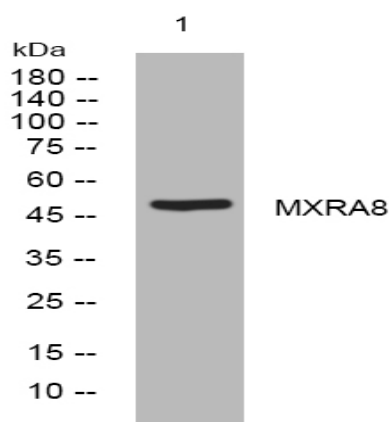


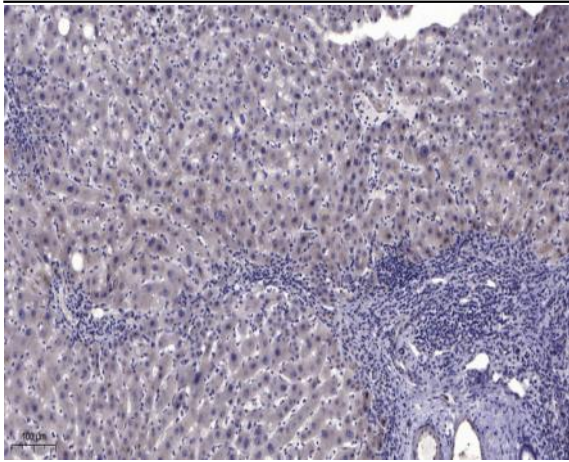
**MXRA8 rabbit pAb**

<b>Catalog No :</b>	YT7284
<b>Reactivity :</b>	Human;Mouse;Rat
<b>Applications :</b>	WB;IHC
<b>Target :</b>	MXRA8
<b>Gene Name :</b>	MXRA8
<b>Protein Name :</b>	MXRA8
<b>Human Gene Id :</b>	54587
<b>Human Swiss Prot No :</b>	Q9BRK3
<b>Mouse Gene Id :</b>	74761
<b>Mouse Swiss Prot No :</b>	Q9DBV4
<b>Rat Gene Id :</b>	313770
<b>Rat Swiss Prot No :</b>	Q5XI43
<b>Immunogen :</b>	Synthesized peptide derived from human MXRA8 AA range: 42-92
<b>Specificity :</b>	This antibody detects endogenous levels of MXRA8 at Human/Mouse/Rat
<b>Formulation :</b>	Liquid in PBS containing 50% glycerol, 0.5% BSA and 0.02% sodium azide.
<b>Source :</b>	Polyclonal, Rabbit,IgG
<b>Dilution :</b>	WB 1:500-2000;IHC 1:50-300
<b>Purification :</b>	The antibody was affinity-purified from rabbit antiserum by affinity-chromatography using epitope-specific immunogen.

<b>Concentration :</b>	1 mg/ml
<b>Storage Stability :</b>	-15°C to -25°C/1 year(Do not lower than -25°C)
<b>Molecularweight :</b>	49kD
<b>Function :</b>	function:May play a role in the maturation and maintenance of blood-brain barrier.,similarity:Contains 2 Ig-like V-type (immunoglobulin-like) domains.,
<b>Subcellular Location :</b>	Cell membrane ; Single-pass type I membrane protein . Cell junction, tight junction . Cytoplasm . Cell projection, cilium membrane . Nucleus . Primarily localizes to the cell membrane (PubMed:23386276). Detected in the cilium of primary chondrocytes (By similarity). Highly expressed at areas of cell-cell contact and may localize to tight junctions (By similarity). Also found in the nucleus where it is detected in the soluble (as opposed to chromatin-bound) fraction (PubMed:23386276). .
<b>Expression :</b>	Detected in endothelial cells in mammary tissue, in both large vessels (left internal mammary artery) and small capillaries (vasa vasorum of the adventitia).
<b>Sort :</b>	10419
<b>No4 :</b>	1
<b>Host :</b>	Rabbit
<b>Modifications :</b>	Unmodified

## Products Images





Immunohistochemical analysis of paraffin-embedded human liver cancer. 1, Antibody was diluted at 1:200(4° overnight). 2, Tris-EDTA,pH9.0 was used for antigen retrieval. 3,Secondary antibody was diluted at 1:200(room temperature, 45min).