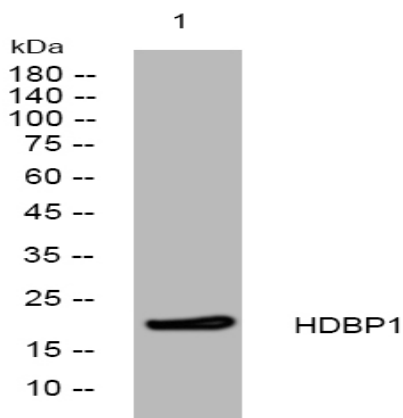


## HDBP1 rabbit pAb

<b>Catalog No :</b>	YT7282
<b>Reactivity :</b>	Human;Mouse
<b>Applications :</b>	WB
<b>Target :</b>	HDBP1
<b>Gene Name :</b>	GPIHBP1 HBP1
<b>Protein Name :</b>	HDBP1
<b>Human Gene Id :</b>	338328
<b>Human Swiss Prot No :</b>	Q8IV16
<b>Mouse Gene Id :</b>	68453
<b>Mouse Swiss Prot No :</b>	Q9D1N2
<b>Immunogen :</b>	Synthesized peptide derived from human HDBP1 AA range: 1-51
<b>Specificity :</b>	This antibody detects endogenous levels of HDBP1 at Human/Mouse
<b>Formulation :</b>	Liquid in PBS containing 50% glycerol, 0.5% BSA and 0.02% sodium azide.
<b>Source :</b>	Polyclonal, Rabbit,IgG
<b>Dilution :</b>	WB 1:500-2000
<b>Purification :</b>	The antibody was affinity-purified from rabbit antiserum by affinity-chromatography using epitope-specific immunogen.
<b>Concentration :</b>	1 mg/ml
<b>Storage Stability :</b>	-15°C to -25°C/1 year(Do not lower than -25°C)

**Molecularweight :** 20kD**Background :** This gene encodes a capillary endothelial cell protein that facilitates the lipolytic processing of triglyceride-rich lipoproteins. The encoded protein is a glycosylphosphatidylinositol-anchored protein that is a member of the lymphocyte antigen 6 (Ly6) family. This protein plays a major role in transporting lipoprotein lipase (LPL) from the subendothelial spaces to the capillary lumen. Mutations in this gene are the cause of hyperlipoproteinemia, type 1D. Alternate splicing results in multiple transcript variants. [provided by RefSeq, Sep 2014],**Function :** caution:The mouse ortholog has been suggested to be a GPI-anchored protein, but no GPI-anchor is detected by prediction methods.,function:Plays a key role in the lipolytic processing of chylomicrons.,polymorphism:The missense variant Arg-56 may be associated with severe hypertriglyceridemia and chylomicronemia.,similarity:Contains 1 UPAR/Ly6 domain.,subcellular location:Localized at the cell surface.,subunit:Binds with high affinity to high-density lipoprotein (HDL) (By similarity). Binds to lipoprotein lipase (LPL), chylomicrons and APOA5.,**Subcellular Location :** Apical cell membrane ; Lipid-anchor, GPI-anchor . Basolateral cell membrane ; Lipid-anchor, GPI-anchor . Cell membrane ; Lipid-anchor, GPI-anchor .**Sort :** 7303**No4 :** 1**Host :** Rabbit**Modifications :** Unmodified

## Products Images



Western blot analysis of lysates from DU145 cells, primary antibody was diluted at 1:1000, 4° over night