

ZCHC7 rabbit pAb

Catalog No :	YT7281
Reactivity :	Human;Mouse;Rat
Applications :	WB
Target :	ZCHC7
Fields :	>>RNA degradation
Gene Name :	ZCCHC7 HSPC086
Protein Name :	ZCHC7
Human Gene Id :	84186
Human Swiss Prot No :	Q8N3Z6
Mouse Gene Id :	319885
Mouse Swiss Prot No :	B1AX39
Rat Gene Id :	298086
Rat Swiss Prot No :	B1WC15
Immunogen :	Synthesized peptide derived from human ZCHC7 AA range: 4-54
Specificity :	This antibody detects endogenous levels of ZCHC7 at Human/Mouse/Rat
Formulation :	Liquid in PBS containing 50% glycerol, 0.5% BSA and 0.02% sodium azide.
Source :	Polyclonal, Rabbit,IgG
Dilution :	WB 1[?]500-2000
Purification :	The antibody was affinity-purified from rabbit antiserum by affinity-

chromatography using epitope-specific immunogen.

Concentration : 1 mg/ml

Storage Stability : -15°C to -25°C/1 year(Do not lower than -25°C)

Molecularweight : 60kD

Function : caution:It is uncertain whether Met-1 or Met-2 is the initiator.,sequence
caution:Contaminating sequence. Potential poly-A sequence.,similarity:Contains 4
CCHC-type zinc fingers.,

Subcellular Location : Nucleus, nucleolus .

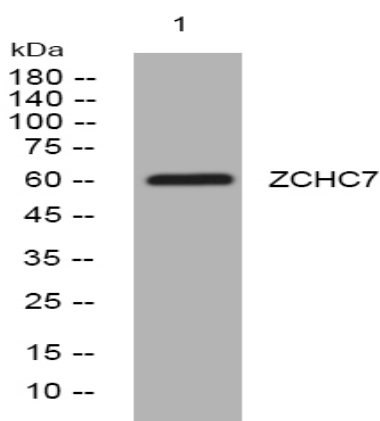
Sort : 24489

No4 : 1

Host : Rabbit

Modifications : Unmodified

Products Images



Western blot analysis of lysates from HeLa cells, primary antibody was diluted at 1:1000, 4° over night