

TPC1 rabbit pAb

Catalog No :	YT7280
Reactivity :	Human;Mouse;Rat
Applications :	WB
Target :	TPC1
Fields :	>>Calcium signaling pathway
Gene Name :	TPCN1 KIAA1169 TPC1
Protein Name :	TPC1
Human Gene Id :	53373
Human Swiss Prot No :	Q9ULQ1
Mouse Gene Id :	252972
Mouse Swiss Prot No :	Q9EQJ0
Rat Gene Id :	246215
Rat Swiss Prot No :	Q9WTN5
Immunogen :	Synthesized peptide derived from human TPC1 AA range: 104-154
Specificity :	This antibody detects endogenous levels of TPC1 at Human/Mouse/Rat
Formulation :	Liquid in PBS containing 50% glycerol, 0.5% BSA and 0.02% sodium azide.
Source :	Polyclonal, Rabbit,IgG
Dilution :	WB 1[?]500-2000
Purification :	The antibody was affinity-purified from rabbit antiserum by affinity-

chromatography using epitope-specific immunogen.

Concentration : 1 mg/ml

Storage Stability : -15°C to -25°C/1 year(Do not lower than -25°C)

Molecularweight : 90kD

Background : Voltage-gated Ca(2+) and Na+ channels have 4 homologous domains, each containing 6 transmembrane segments, S1 to S6. TPCN1 is similar to these channels, but it has only 2 domains containing S1 to S6 (Ishibashi et al., 2000 [PubMed 10753632]).[supplied by OMIM, Mar 2008],

Function : domain:Each of the two internal repeats contains five hydrophobic transmembrane segments (S1, S2, S3, S5, S6) and one positively charged transmembrane segment (S4). S4 segments probably represent the voltage-sensor and are characterized by a series of positively charged amino acids at every third position.,function:May function as one of the major voltage-gated Ca(2+) channel (VDCC) across the plasma membrane.,similarity:Belongs to the calcium channel alpha-1 subunit (TC 1.A.1.11) family.,subunit:Dimer .,tissue specificity:Highest expression found in the heart and kidney, and lowest expression found in the spleen.,

Subcellular Location : Lysosome membrane ; Multi-pass membrane protein . Endosome membrane ; Multi-pass membrane protein . Early endosome membrane ; Multi-pass membrane protein . Recycling endosome membrane ; Multi-pass membrane protein .

Expression : Highest expression found in the heart and kidney, and lowest expression found in the spleen.

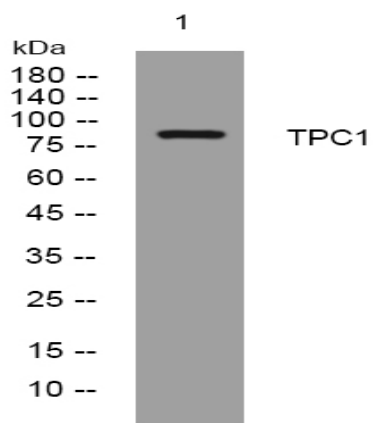
Sort : 23447

No4 : 1

Host : Rabbit

Modifications : Unmodified

Products Images



Western blot analysis of lysates from HpeG2 cells, primary antibody was diluted at 1:1000, 4° over night