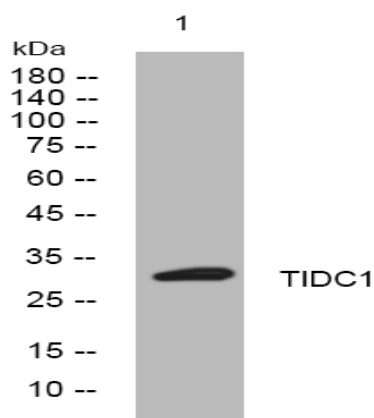


TIDC1 rabbit pAb

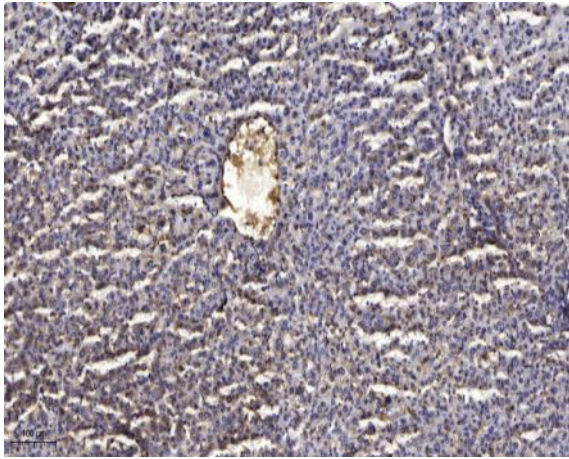
Catalog No :	YT7279
Reactivity :	Human;Mouse;Rat
Applications :	WB;ELISA;IHC
Target :	TIDC1
Gene Name :	TIMMDC1 C3orf1 UNQ247/PRO284
Protein Name :	TIDC1
Human Gene Id :	51300
Human Swiss Prot No :	Q9NPL8
Mouse Gene Id :	76916
Mouse Swiss Prot No :	Q8BUY5
Rat Gene Id :	303922
Rat Swiss Prot No :	Q6AY94
Immunogen :	Synthesized peptide derived from human TIDC1 AA range: 74-124
Specificity :	This antibody detects endogenous levels of TIDC1 at Human/Mouse/Rat
Formulation :	Liquid in PBS containing 50% glycerol, 0.5% BSA and 0.02% sodium azide.
Source :	Polyclonal, Rabbit,IgG
Dilution :	WB 1:500-2000;IHC 1:50-300; ELISA 2000-20000
Purification :	The antibody was affinity-purified from rabbit antiserum by affinity-chromatography using epitope-specific immunogen.

Concentration :	1 mg/ml
Storage Stability :	-15°C to -25°C/1 year(Do not lower than -25°C)
Molecularweight :	31kD
Function :	tissue specificity:Generalized expression enhanced in heart and skeletal muscle.,
Subcellular Location :	Mitochondrion membrane ; Multi-pass membrane protein .
Expression :	Generalized expression enhanced in heart and skeletal muscle.
Sort :	17138
No4 :	1
Host :	Rabbit
Modifications :	Unmodified

Products Images



Western blot analysis of lysates from VEC cells, primary antibody was diluted at 1:1000, 4° over night



Immunohistochemical analysis of paraffin-embedded human liver cancer. 1, Antibody was diluted at 1:200(4° overnight). 2, Tris-EDTA,pH9.0 was used for antigen retrieval. 3,Secondary antibody was diluted at 1:200(room temperature, 45min).