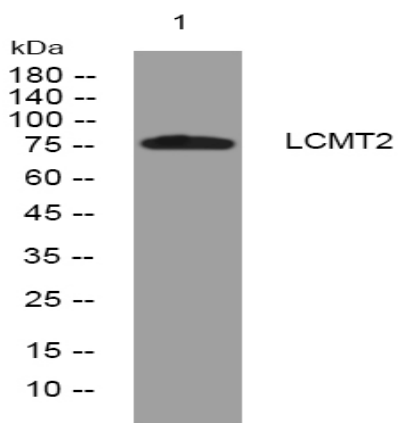


LCMT2 rabbit pAb

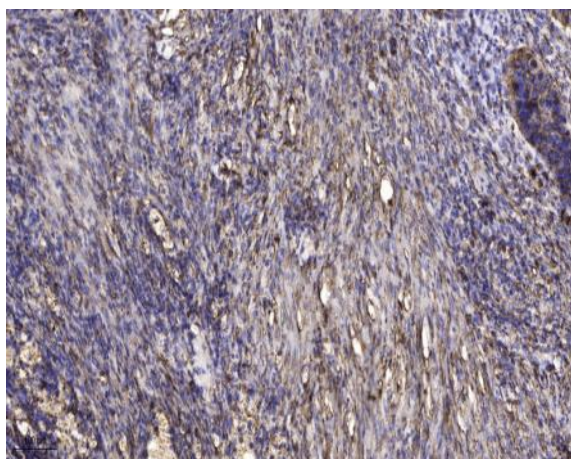
Catalog No :	YT7278
Reactivity :	Human;Mouse;Rat
Applications :	WB;ELISA;IHC
Target :	LCMT2
Gene Name :	LCMT2 KIAA0547 TYW4
Protein Name :	LCMT2
Human Gene Id :	9836
Human Swiss Prot No :	O60294
Mouse Gene Id :	329504
Mouse Swiss Prot No :	Q8BYR1
Rat Gene Id :	296098
Rat Swiss Prot No :	Q5XIA3
Immunogen :	Synthesized peptide derived from human LCMT2 AA range: 298-348
Specificity :	This antibody detects endogenous levels of LCMT2 at Human/Mouse/Rat
Formulation :	Liquid in PBS containing 50% glycerol, 0.5% BSA and 0.02% sodium azide.
Source :	Polyclonal, Rabbit,IgG
Dilution :	WB 1:500-2000;IHC 1:50-300; ELISA 2000-20000
Purification :	The antibody was affinity-purified from rabbit antiserum by affinity-chromatography using epitope-specific immunogen.

Concentration :	1 mg/ml
Storage Stability :	-15°C to -25°C/1 year(Do not lower than -25°C)
Molecularweight :	75kD
Background :	The protein encoded by this intronless gene belongs to the highly variable methyltransferase superfamily. This gene is the inferred homolog of the <i>Saccharomyces cerevisiae</i> carboxymethyltransferase gene PPM2 that is essential for the synthesis of the hypermodified guanosine Wybutosine (yW). [provided by RefSeq, Jul 2008],
Function :	function:Probable S-adenosyl-L-methionine-dependent methyltransferase that acts as a component of the wybutosine biosynthesis pathway. Wybutosine is a hyper modified guanosine with a tricyclic base found at the 3'-position adjacent to the anticodon of eukaryotic phenylalanine tRNA (By similarity). May methylate the carboxyl group of leucine residues to form alpha-leucine ester residues.,pathway:tRNA modification; wybutosine-tRNA(Phe) biosynthesis.,similarity:Belongs to the methyltransferase superfamily. LCMT family.,subunit:Interacts with RNF144B/IBRDC2.,
Subcellular Location :	cytoplasm,cytosol,
Sort :	9151
No4 :	1
Host :	Rabbit
Modifications :	Unmodified

Products Images



Western blot analysis of lysates from PC-12 cells, primary antibody was diluted at 1:1000, 4° over night



Immunohistochemical analysis of paraffin-embedded human Squamous cell carcinoma of lung. 1, Antibody was diluted at 1:200(4° overnight). 2, Tris-EDTA,pH9.0 was used for antigen retrieval. 3,Secondary antibody was diluted at 1:200(room temperature, 45min).