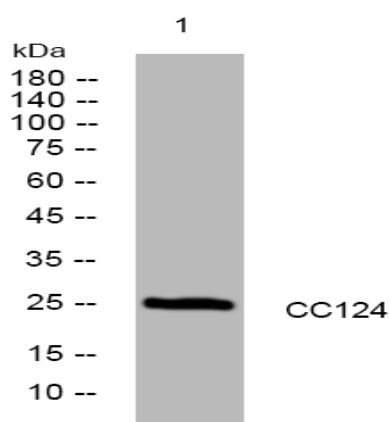


CC124 rabbit pAb

Catalog No :	YT7273
Reactivity :	Human;Mouse
Applications :	WB
Target :	CC124
Gene Name :	CCDC124
Protein Name :	CC124
Human Gene Id :	115098
Human Swiss Prot No :	Q96CT7
Mouse Gene Id :	234388
Mouse Swiss Prot No :	Q9D8X2
Immunogen :	Synthesized peptide derived from human CC124 AA range: 56-106
Specificity :	This antibody detects endogenous levels of CC124 at Human/Mouse
Formulation :	Liquid in PBS containing 50% glycerol, 0.5% BSA and 0.02% sodium azide.
Source :	Polyclonal, Rabbit,IgG
Dilution :	WB 1:500-2000
Purification :	The antibody was affinity-purified from rabbit antiserum by affinity-chromatography using epitope-specific immunogen.
Concentration :	1 mg/ml
Storage Stability :	-15°C to -25°C/1 year(Do not lower than -25°C)

Molecularweight :	25kD
Function :	similarity:Belongs to the CCDC124 family.,
Subcellular Location :	Cytoplasm, cytoskeleton, microtubule organizing center, centrosome . Midbody . Colocalizes with gamma-tubulin at interphase, prophase, metaphase, and anaphase. Relocates from centrosome to midbody at telophase.
Expression :	Ubiquitously expressed.
Sort :	3296
No4 :	1
Host :	Rabbit
Modifications :	Unmodified

Products Images



Western blot analysis of lysates from A431 cells, primary antibody was diluted at 1:1000, 4° over night