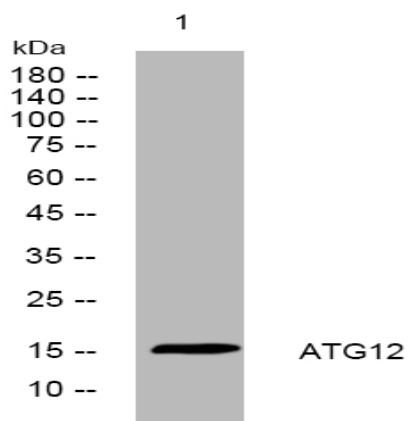


ATG12 rabbit pAb

| | |
|------------------------------|---|
| Catalog No : | YT7272 |
| Reactivity : | Human;Mouse;Rat |
| Applications : | WB |
| Target : | ATG12 |
| Fields : | >>FoxO signaling pathway;>>Autophagy - other;>>Autophagy - animal;>>NOD-like receptor signaling pathway;>>RIG-I-like receptor signaling pathway;>>Shigellosis |
| Gene Name : | ATG12 APG12 APG12L |
| Protein Name : | ATG12 |
| Human Gene Id : | 9140 |
| Human Swiss Prot No : | O94817 |
| Mouse Gene Id : | 67526 |
| Mouse Swiss Prot No : | Q9CQY1 |
| Rat Gene Id : | 361321 |
| Rat Swiss Prot No : | Q2TBJ5 |
| Immunogen : | Synthesized peptide derived from human ATG12 AA range: 80-130 |
| Specificity : | This antibody detects endogenous levels of ATG12 at Human/Mouse/Rat |
| Formulation : | Liquid in PBS containing 50% glycerol, 0.5% BSA and 0.02% sodium azide. |
| Source : | Polyclonal, Rabbit,IgG |
| Dilution : | WB 1:500-2000 |

| | |
|-------------------------------|--|
| Purification : | The antibody was affinity-purified from rabbit antiserum by affinity-chromatography using epitope-specific immunogen. |
| Concentration : | 1 mg/ml |
| Storage Stability : | -15°C to -25°C/1 year(Do not lower than -25°C) |
| Molecularweight : | 15kD |
| Background : | Autophagy is a process of bulk protein degradation in which cytoplasmic components, including organelles, are enclosed in double-membrane structures called autophagosomes and delivered to lysosomes or vacuoles for degradation. ATG12 is the human homolog of a yeast protein involved in autophagy (Mizushima et al., 1998 [PubMed 9852036]).[supplied by OMIM, Mar 2008], |
| Function : | function:Required for autophagy.,similarity:Belongs to the ATG12 family.,subunit:Conjugated to ATG5.,tissue specificity:Ubiquitous., |
| Subcellular Location : | Cytoplasm . Preautophagosomal structure membrane ; Peripheral membrane protein . TECPR1 recruits the ATG12-ATG5 conjugate to the autolysosomal membrane. |
| Expression : | Ubiquitous. |
| Tag : | orthogonal |
| Sort : | 2374 |
| No4 : | 1 |
| Host : | Rabbit |
| Modifications : | Unmodified |

Products Images



Western blot analysis of lysates from HpeG2 cells, primary antibody was diluted at 1:1000, 4° over night