

AMELY rabbit pAb

Catalog No :	YT7268
Reactivity :	Human
Applications :	WB
Target :	AMELY
Gene Name :	AMELY AMGL AMGY
Protein Name :	AMELY
Human Gene Id :	266
Human Swiss Prot No :	Q99218
Immunogen :	Synthesized peptide derived from human AMELY.AA range 17-57
Specificity :	This antibody detects endogenous levels of AMELY at Human
Formulation :	Liquid in PBS containing 50% glycerol, 0.5% BSA and 0.02% sodium azide.
Source :	Polyclonal, Rabbit,IgG
Dilution :	WB 1:500-2000
Purification :	The antibody was affinity-purified from rabbit antiserum by affinity-chromatography using epitope-specific immunogen.
Concentration :	1 mg/ml
Storage Stability :	-15°C to -25°C/1 year(Do not lower than -25°C)
Molecularweight :	23kD
Background :	This gene encodes a member of the amelogenin family of extracellular matrix proteins. Amelogenins are involved in biomineralization during tooth enamel development. Mutations in a related gene on chromosome X cause X-linked

amelogenesis imperfecta. [provided by RefSeq, Jul 2008],

Function :

developmental stage:Transiently but abundantly expressed by ameloblasts during tooth development. Amelogenin is the predominant protein in developing dental enamel.,function:Plays a role in biomineralization. Seems to regulate the formation of crystallites during the secretory stage of tooth enamel development. Thought to play a major role in the structural organization and mineralization of developing enamel.,miscellaneous:This isoform is encoded on the Y chromosome.,similarity:Belongs to the amelogenin family.,

Subcellular Location :

Secreted, extracellular space, extracellular matrix.

Sort :

1946

No4 :

1

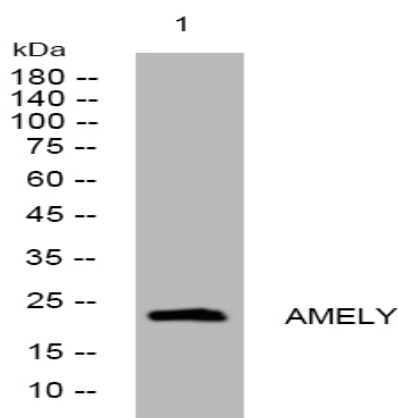
Host :

Rabbit

Modifications :

Unmodified

Products Images



Western blot analysis of lysates from HuvEc cells, primary antibody was diluted at 1:1000, 4° over night